

www.flitetest.com

FT EZ Glider

Designed By: Josh Bixler

Plans By: Dan Sponholz

Version: 1.0

Date: 2019.02.13



GENERAL SPECIFICATIONS:

LENGTH:	20.00 in	508 mm
CG:	1.50 in	38 mm
WINGSPAN:	28.00 in	711 mm
WING AREA:	140.3 in ²	9.1 dm ²
ALL UP WEIGHT:	4.0 oz.	114 g
WING LOADING:	4.1 oz/ft ²	12 g/dm ²
WCL:	4.2	

BUILD SKILL LEVEL:

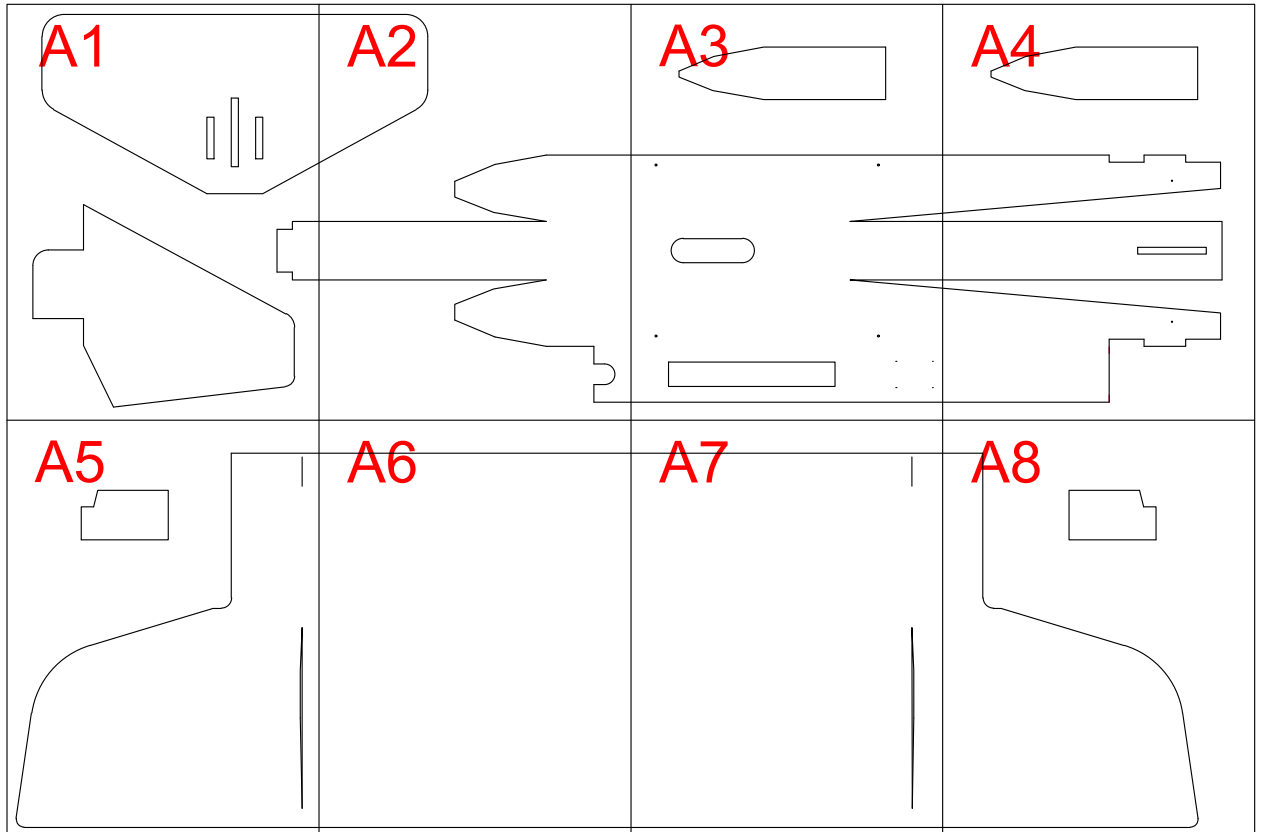


PILOT SKILL LEVEL:





FT EZ Glider: Tile A Key

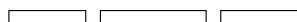
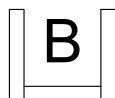
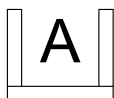




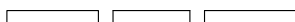
Drawing Key



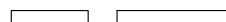
FOLD TYPES



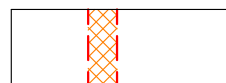
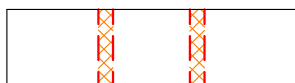
A - FOLD (ABOVE)



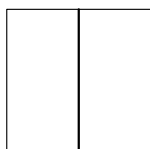
B - FOLD (BESIDE)



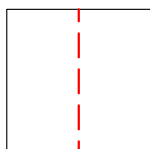
C - FOLD (COVER)



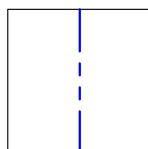
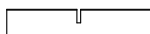
LINE TYPE/COLOR



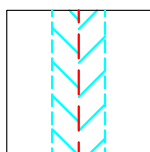
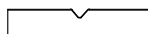
CUT



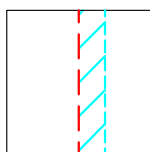
50% SCORE



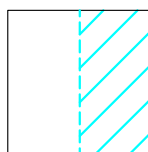
CREASE



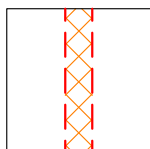
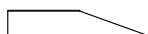
45° DOUBLE
BEVEL



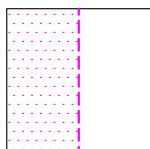
45° SINGLE
BEVEL



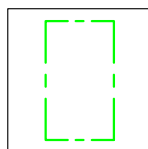
EDGE
BEVEL



CAVITY



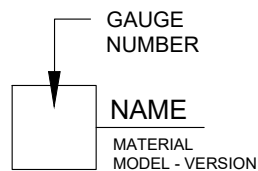
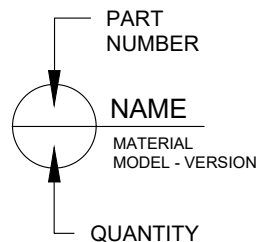
REMOVE
PAPER



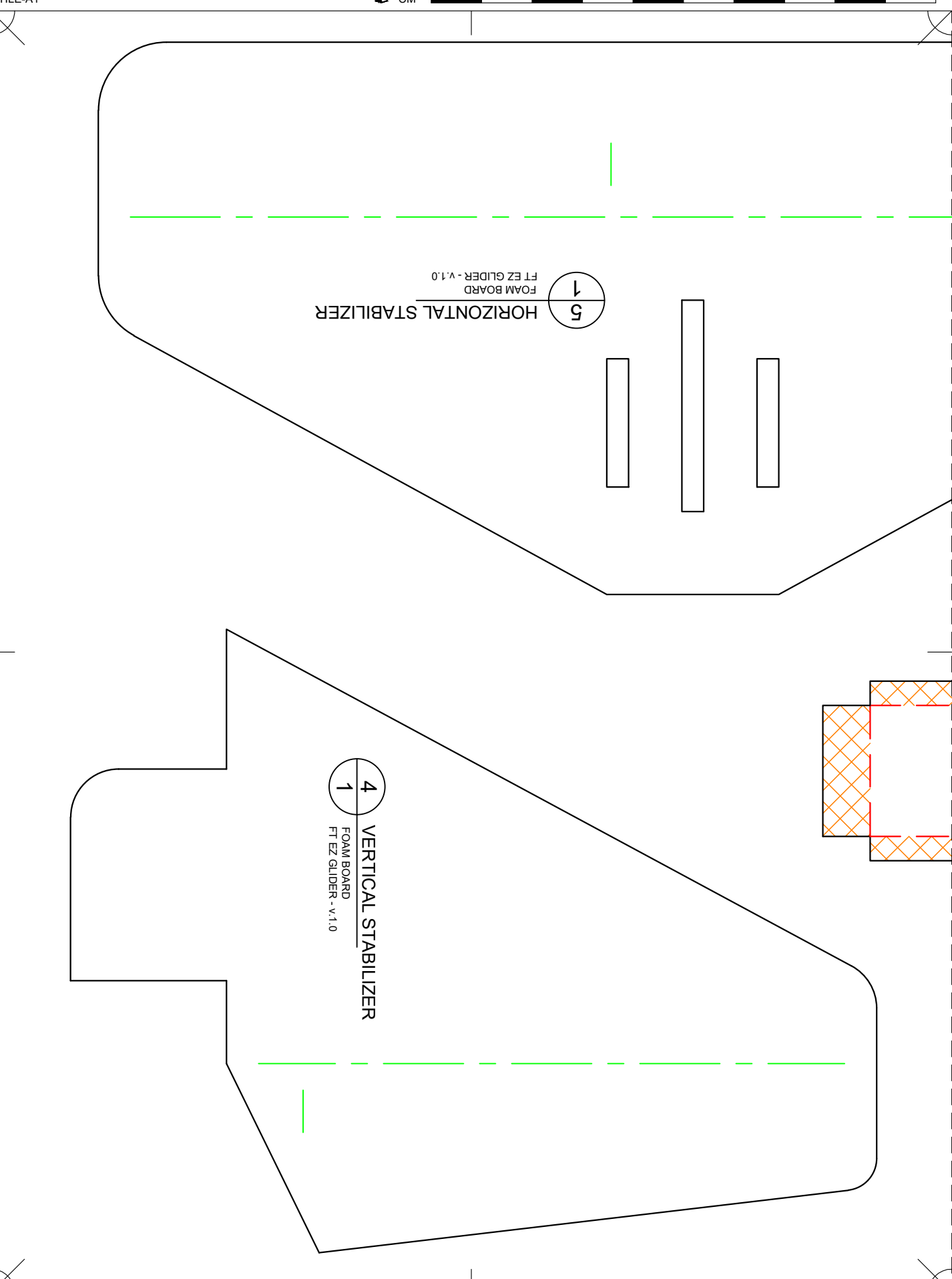
REFERENCE/
OPTIONAL



SYMBOLS

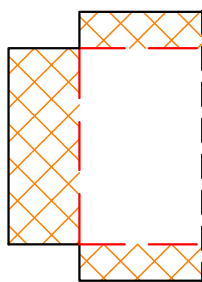


CENTER
OF
GRAVITY
(CG)



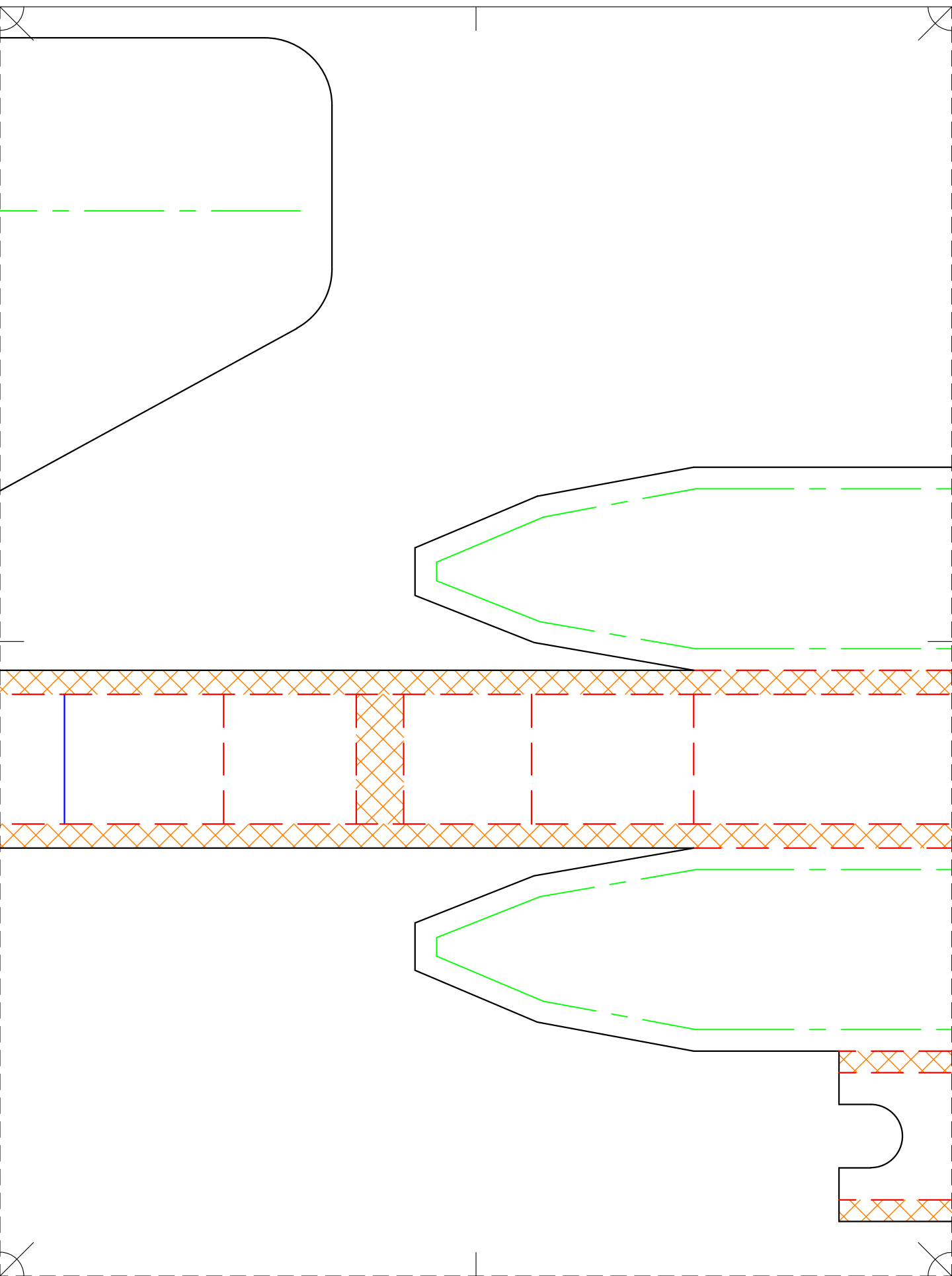
5
1
FOAM BOARD
FT EZ GLIDER - v.1.0
HORIZONTAL STABILIZER

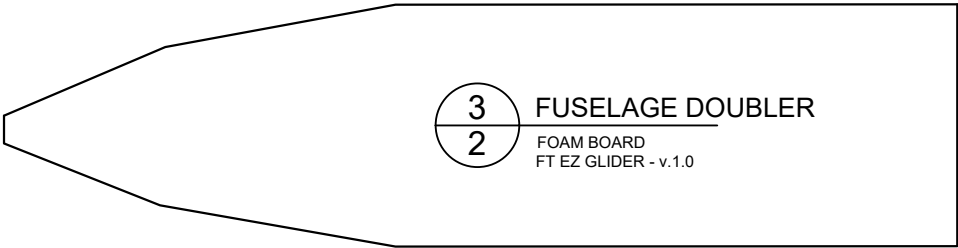
4
1
FOAM BOARD
FT EZ GLIDER - v.1.0
VERTICAL STABILIZER





IN
CM

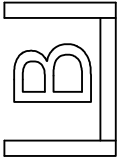




3
2

FUSELAGE DOUBLER

FOAM BOARD
FT EZ GLIDER - v.1.0



2
1

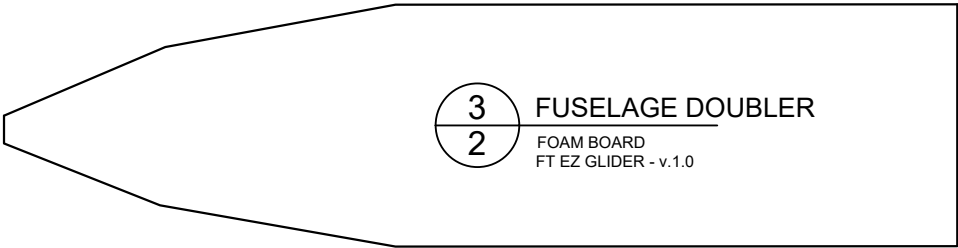
FUSELAGE

FOAM BOARD
FT EZ GLIDER - v.1.0





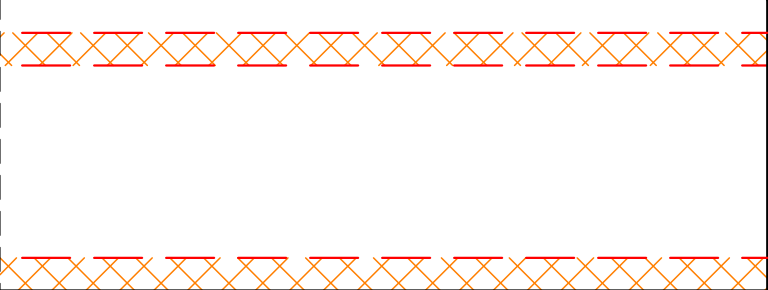
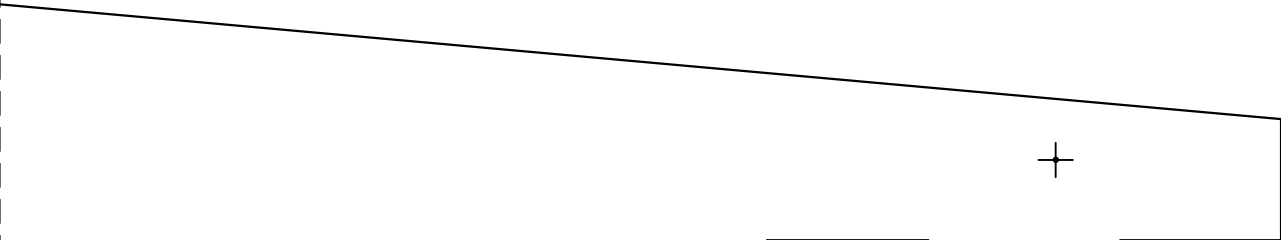
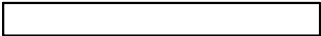
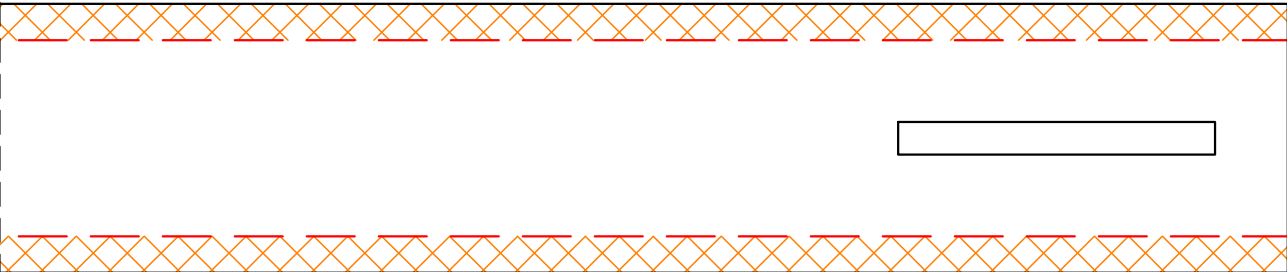
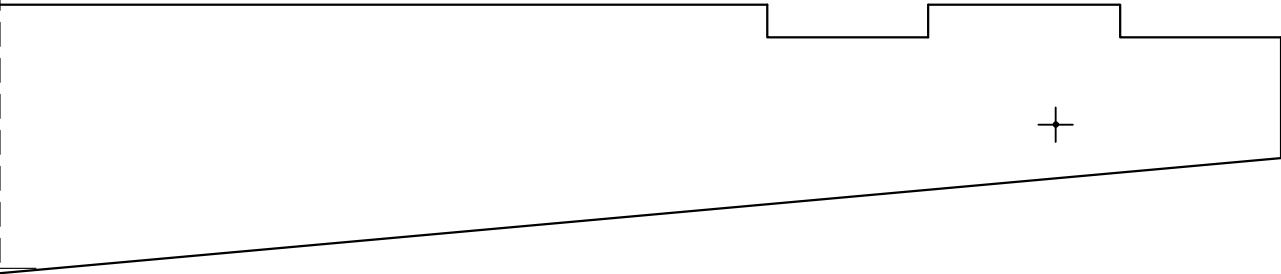
IN
CM



3
2

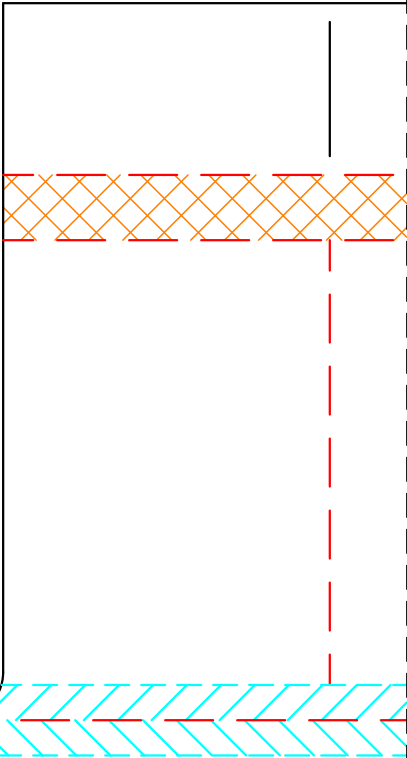
FUSELAGE DOUBLER

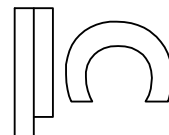
FOAM BOARD
FT EZ GLIDER - v.1.0



G1

POLYHEDRAL GAUGE
FOAM BOARD
FT EZ GLIDER - v.1.0





WING

FOAM BOARD
FT EZ GLIDER - v.1.0

45° DOUBLE BEVEL

