



www.flitetest.com

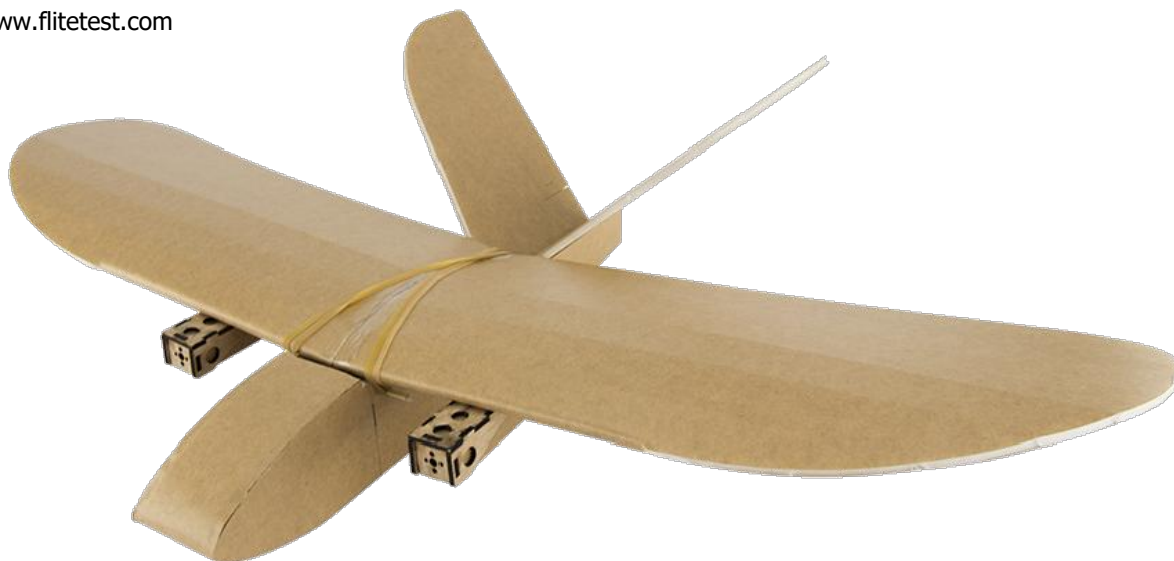
FT Twin Sparrow

Designed By: Josh Bixler

Drawing By: Dan Sponholz

Version: 1.0

Date: 2018.05.10



GENERAL SPECIFICATIONS:

LENGTH:	16.00 in	406 mm
CG:	2.75 in	69 mm
WINGSPAN:	28.50 in	723 mm
WING AREA:	180.0 in ²	11.6 dm ²
DRY WEIGHT:	5.6 oz.	158 g
ALL UP WEIGHT:	9.1 oz.	258 g
WING LOADING:	7.3 oz/ft ²	22 g/dm ²
WCL:	6.5	
THROWS:	12°	
EXPO:	30%	
CHANNELS:	3	[THR V-TAIL]

RECOMMENDED ELECTRONICS:

MOTOR:	2X 1106 4500 kv
PROPELLER:	2X 3x3.5x3
ESC:	2X 12a min.
SERVOS:	2X 5 g
BATTERY:	450-850 mAh 2S-4S



BUILD SKILL LEVEL:

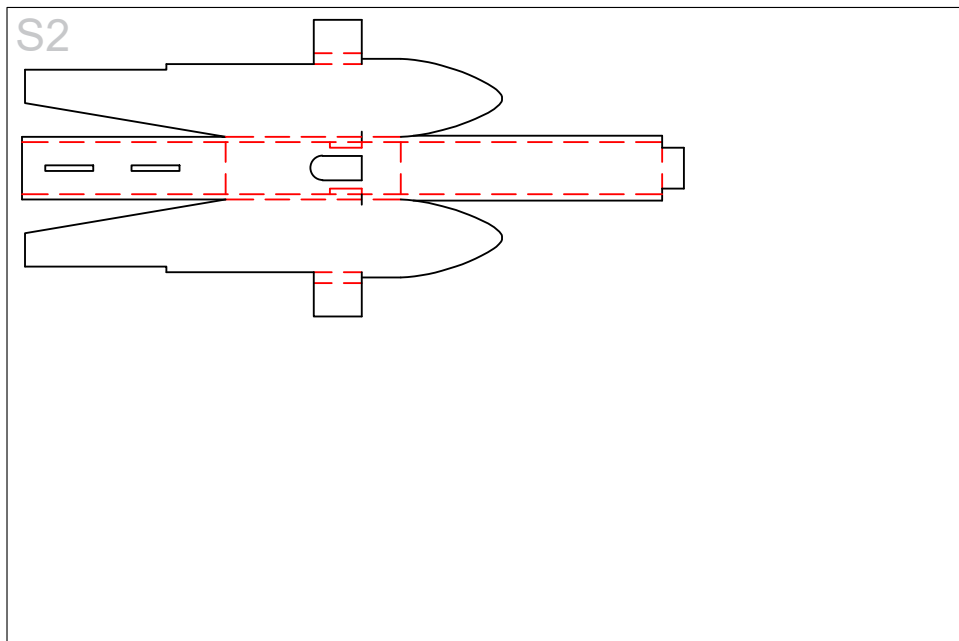
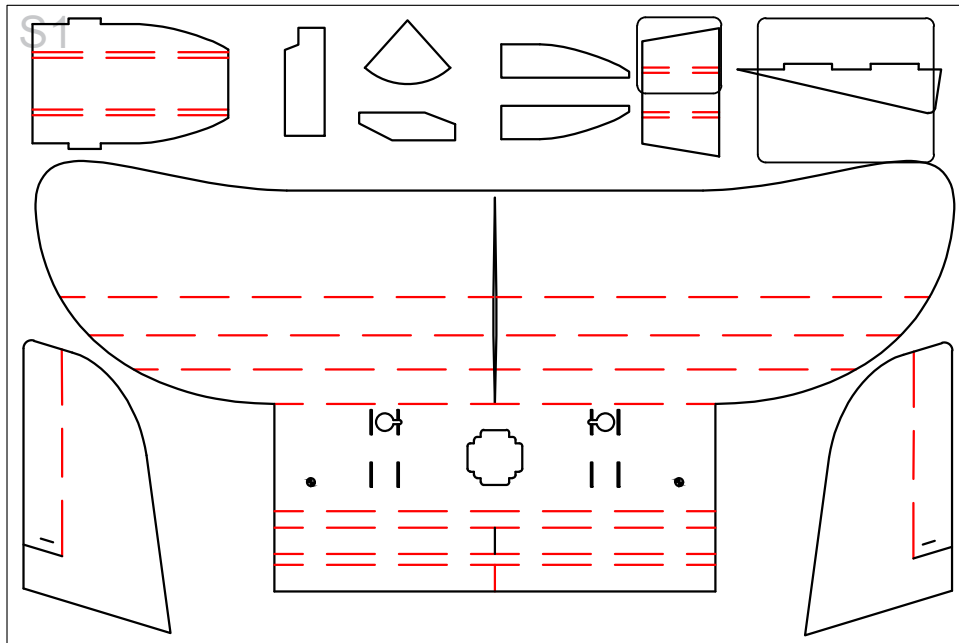


PILOT SKILL LEVEL:



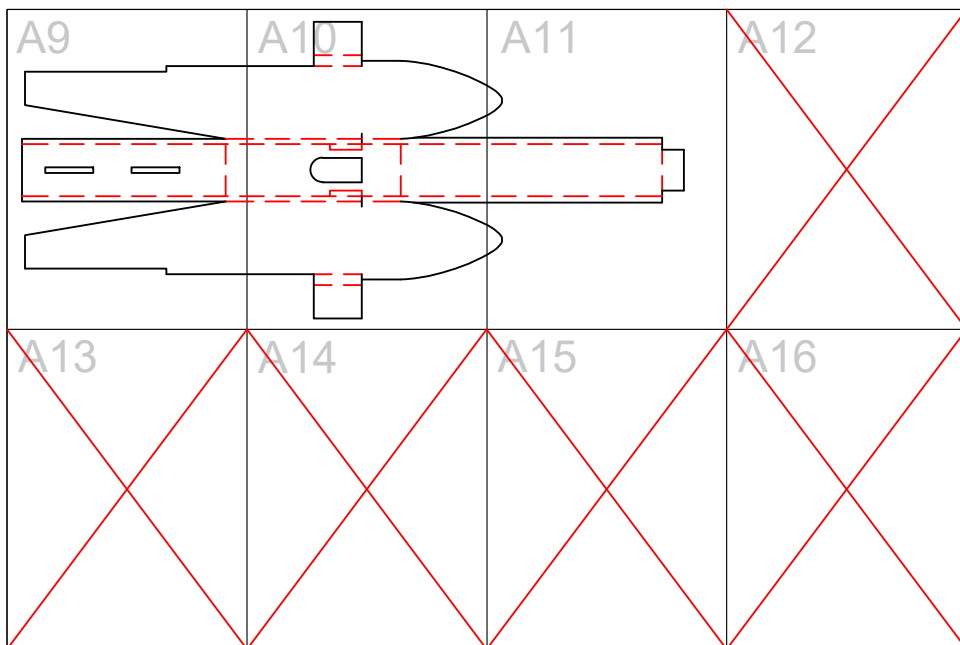
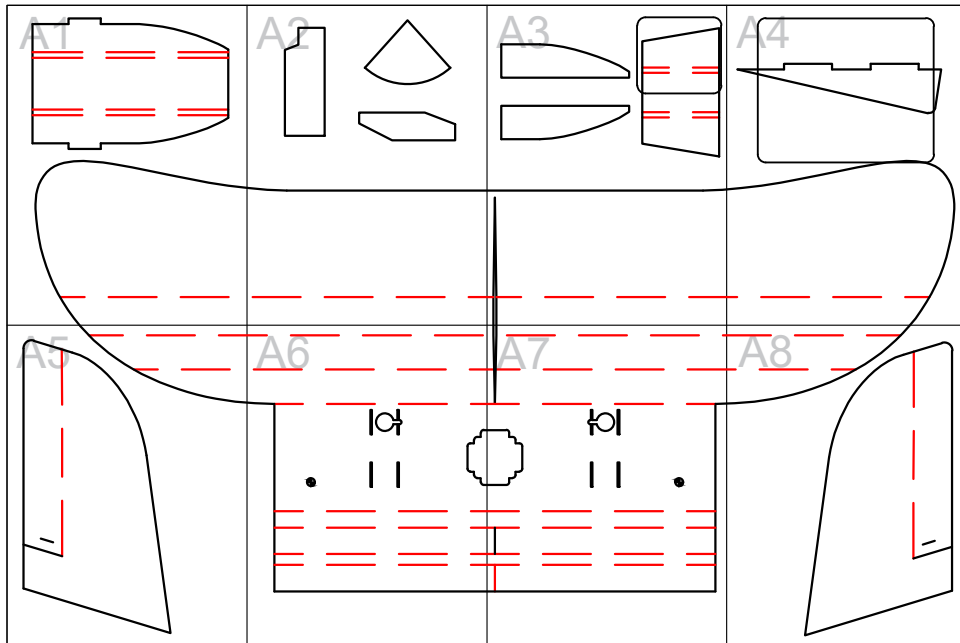


FT Twin Sparrow: Full-Size Key



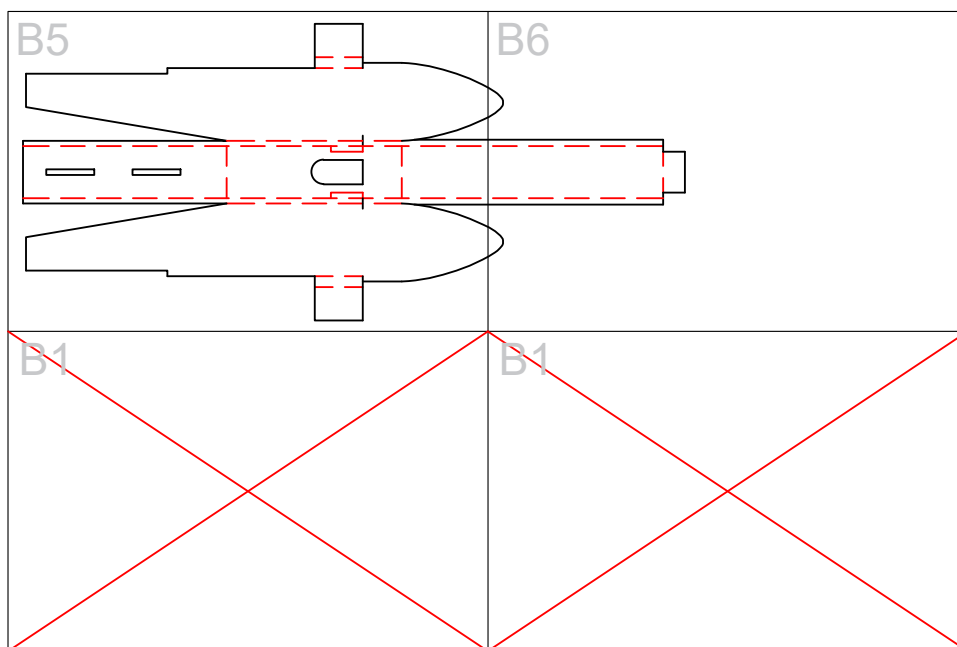
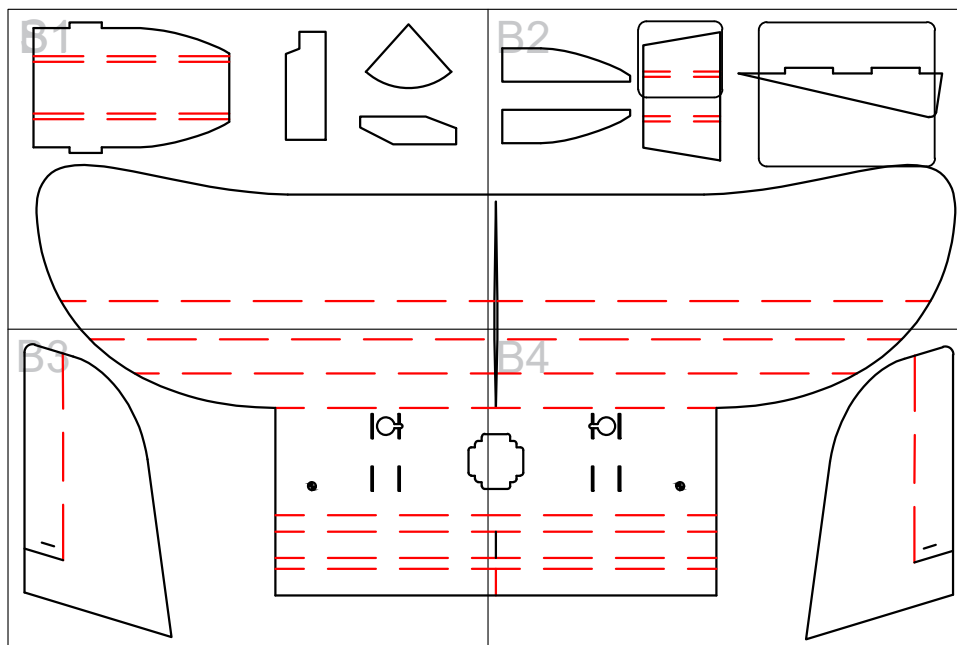


FT Twin Sparrow: A-Size Tile Key





FT Twin Sparrow: B-Size Tile Key

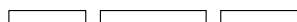
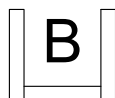
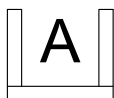




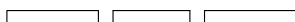
Drawing Key



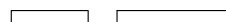
FOLD TYPES



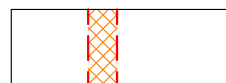
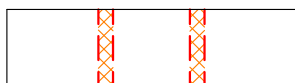
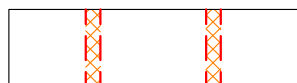
A - FOLD (ABOVE)



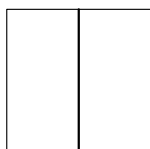
B - FOLD (BESIDE)



C - FOLD (COVER)



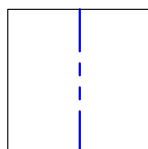
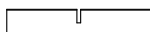
LINE TYPE/COLOR



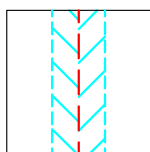
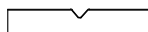
CUT



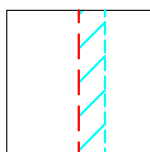
50% SCORE



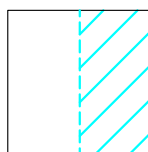
CREASE



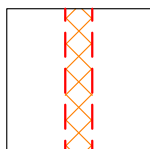
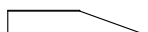
45° DOUBLE
BEVEL



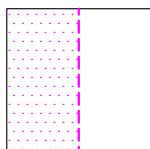
45° SINGLE
BEVEL



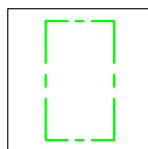
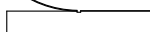
EDGE
BEVEL



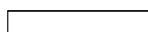
CAVITY



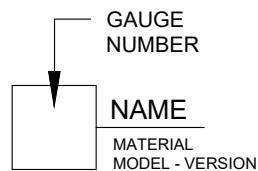
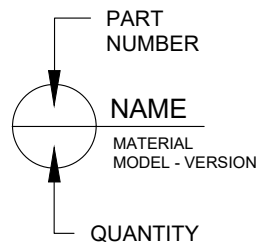
REMOVE
PAPER



REFERENCE/
OPTIONAL



SYMBOLS



CENTER
OF
GRAVITY
(CG)



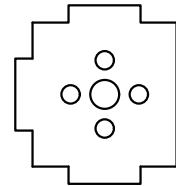
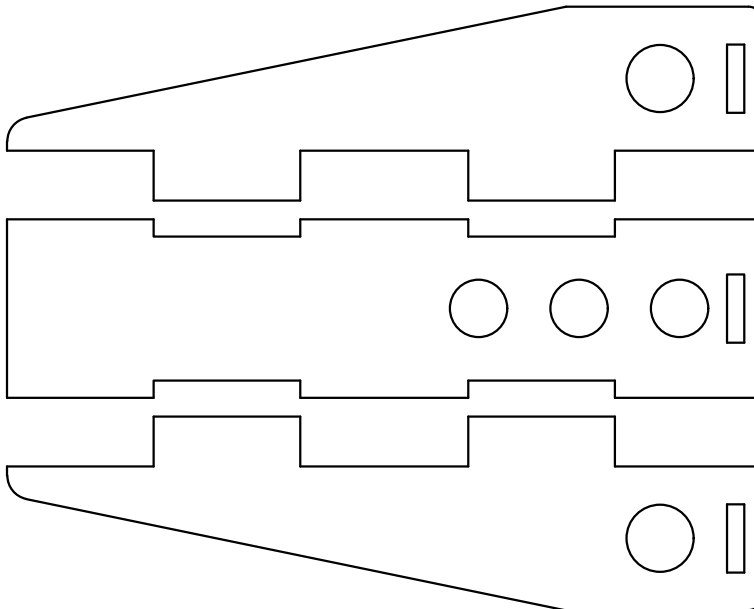
FT Twin Sparrow: Wood Parts



FOR FT TWIN SPARROW

FT MICRO NACELLE / FIREWALL

2X

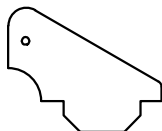


HOBBY GRADE PLYWOOD
3/32" (2.4 mm) THICK

FOR FT SPARROW (PUSHER)

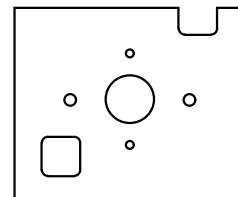
FT MINI CONTROL HORN

2X

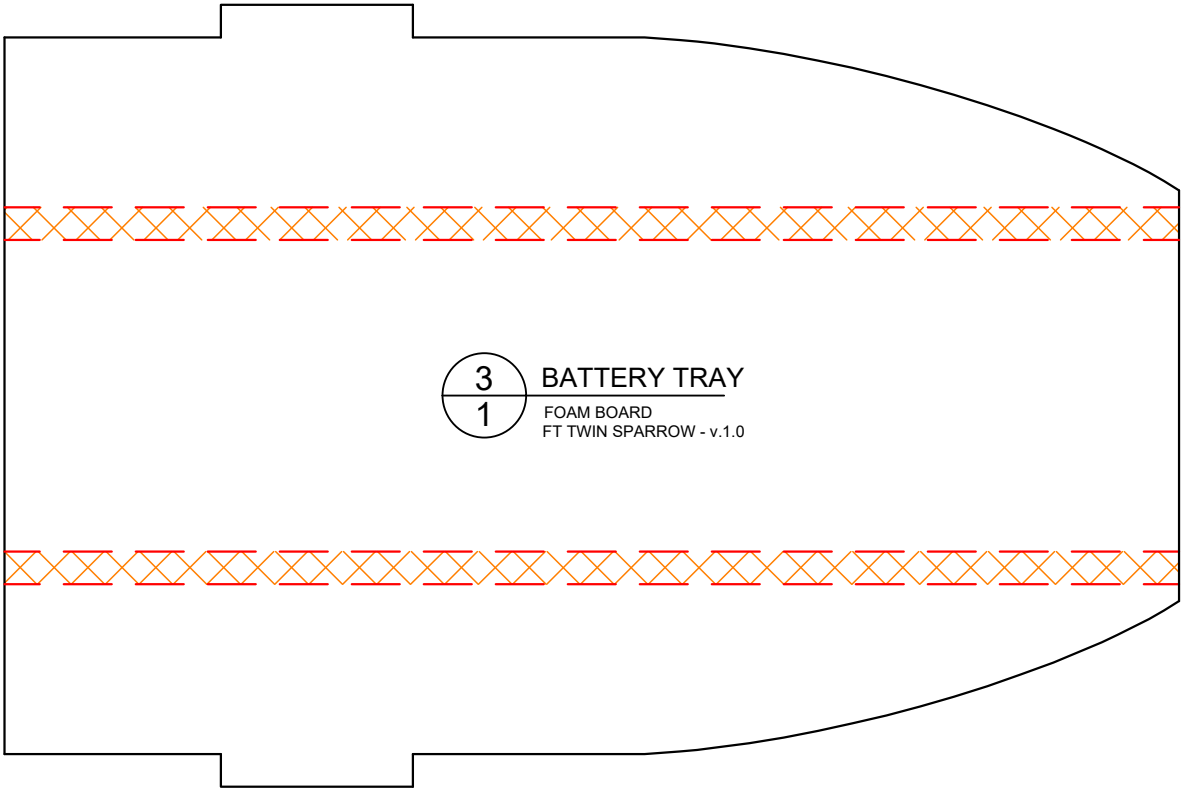


HOBBY GRADE PLYWOOD
1/16" (1.6 mm) THICK

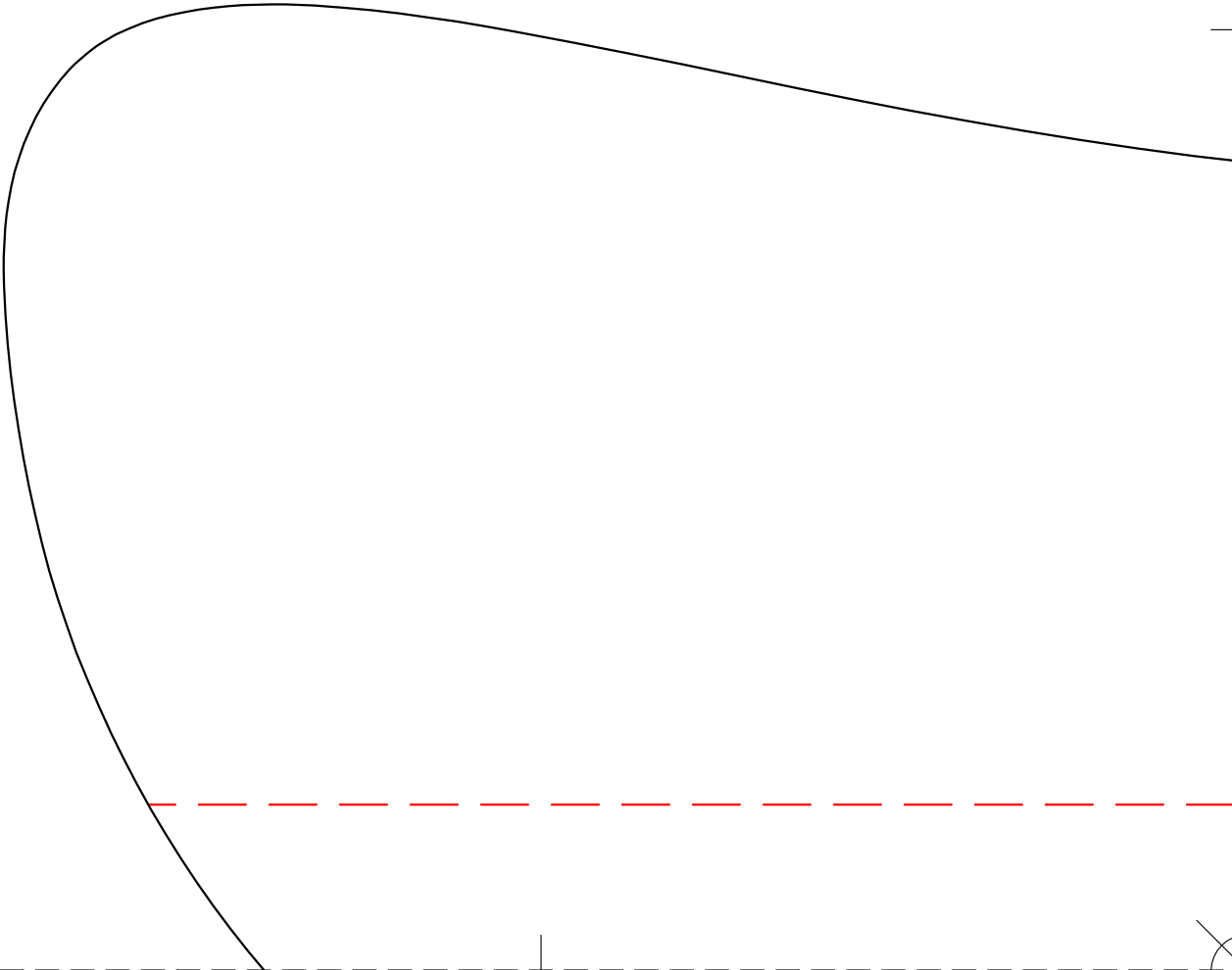
FT MINI FIREWALL

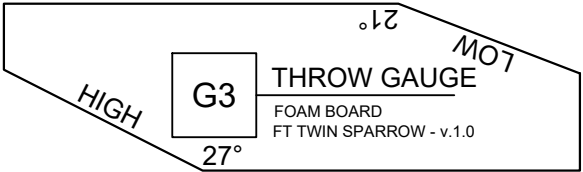
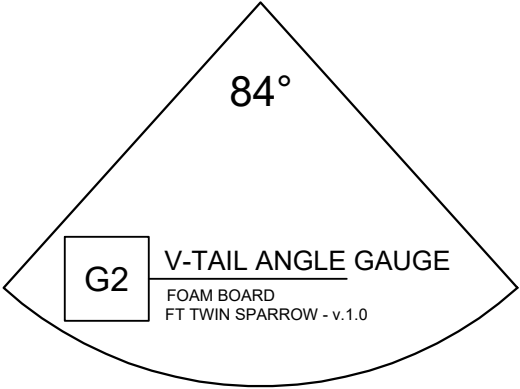
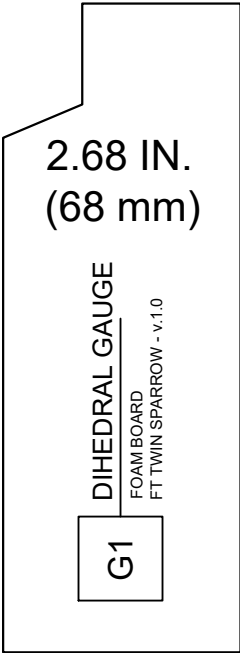


HOBBY GRADE PLYWOOD
1/16" (1.6 mm) THICK



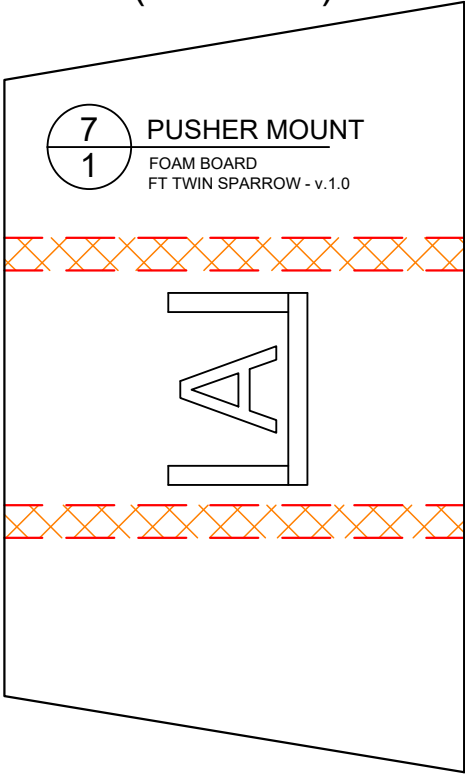
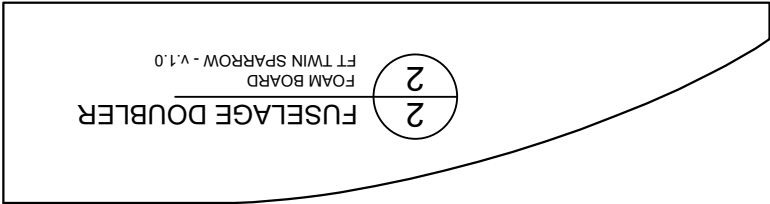
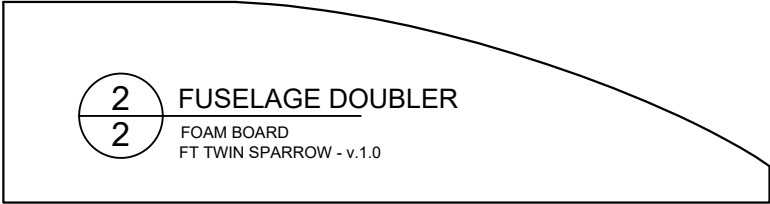
BATTERY TRAY
FOAM BOARD
FT TWIN SPARROW - v.1.0





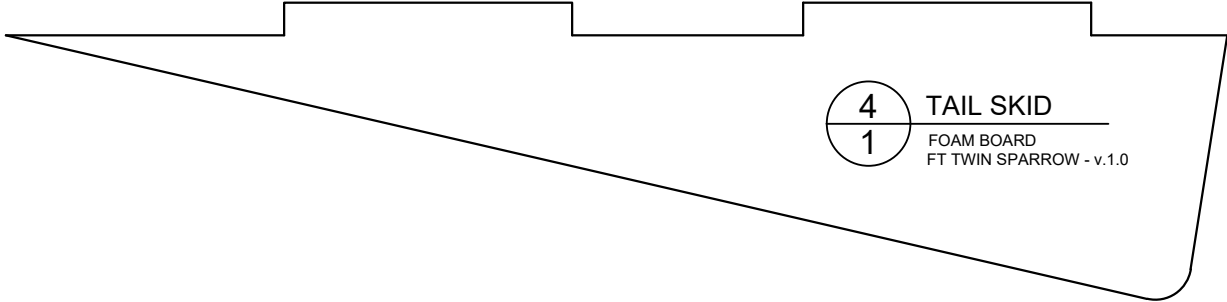


OPTIONAL
FOR FT SPARROW
(PUSHER)



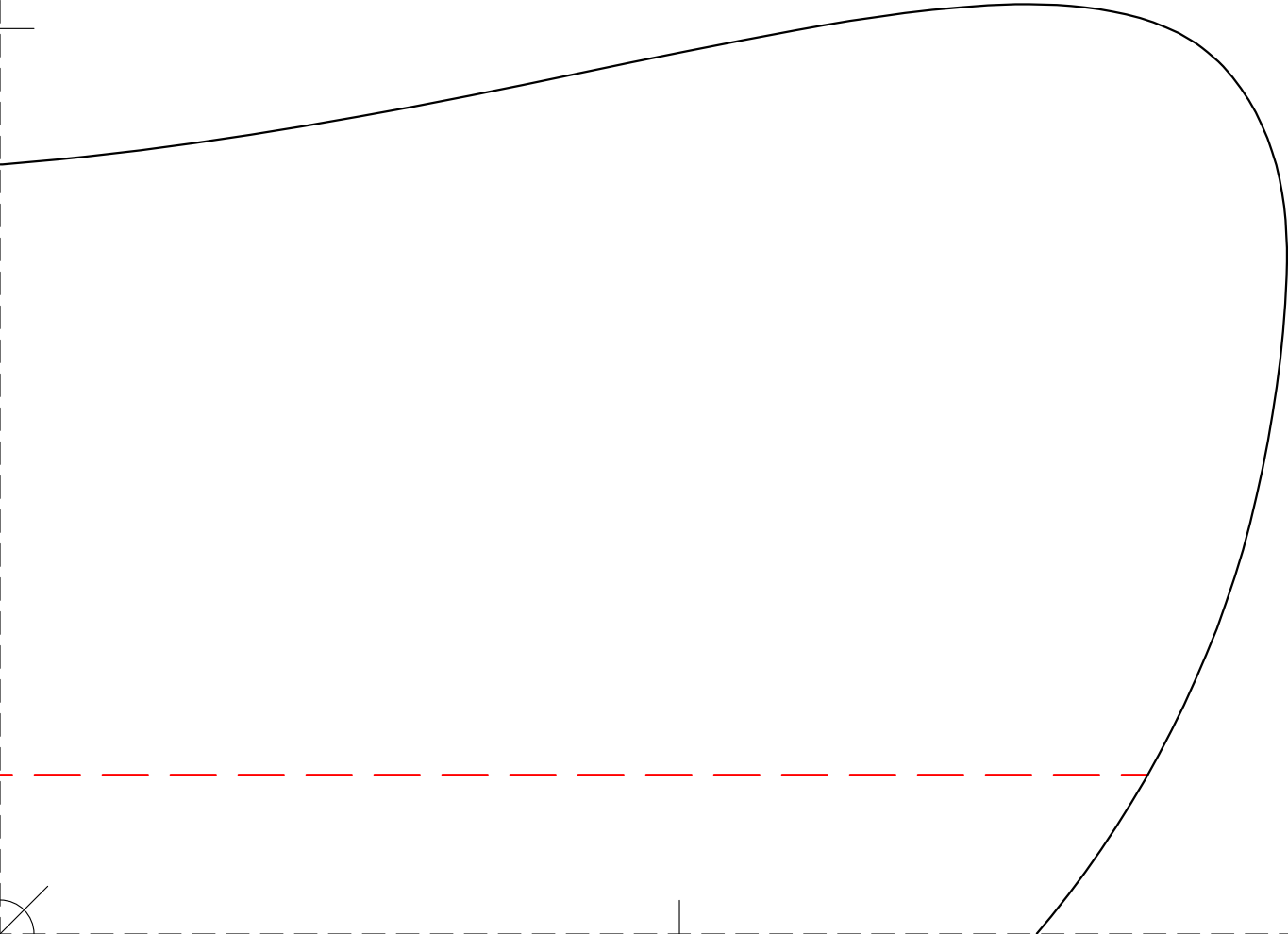


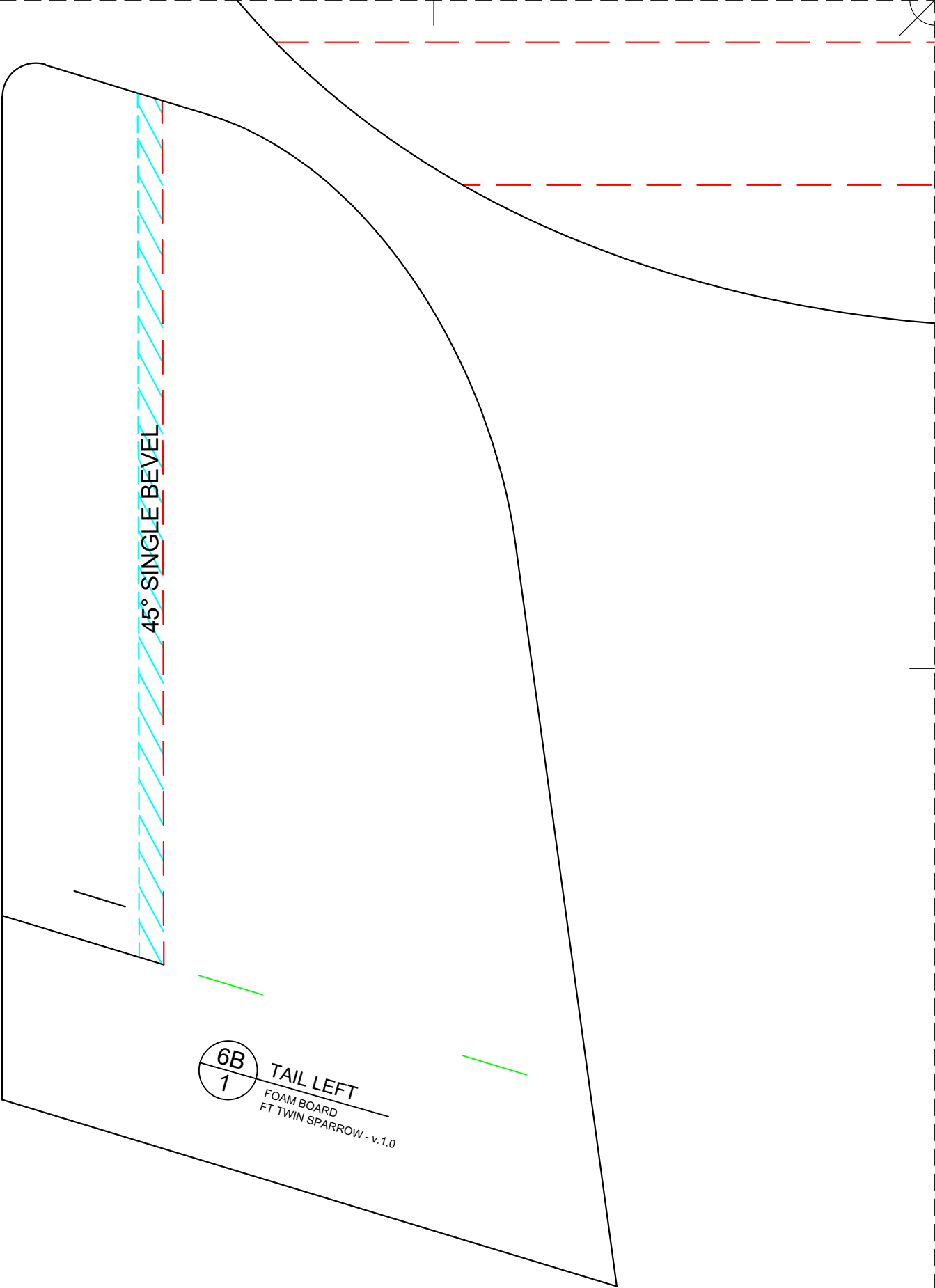
IN
CM



4
1

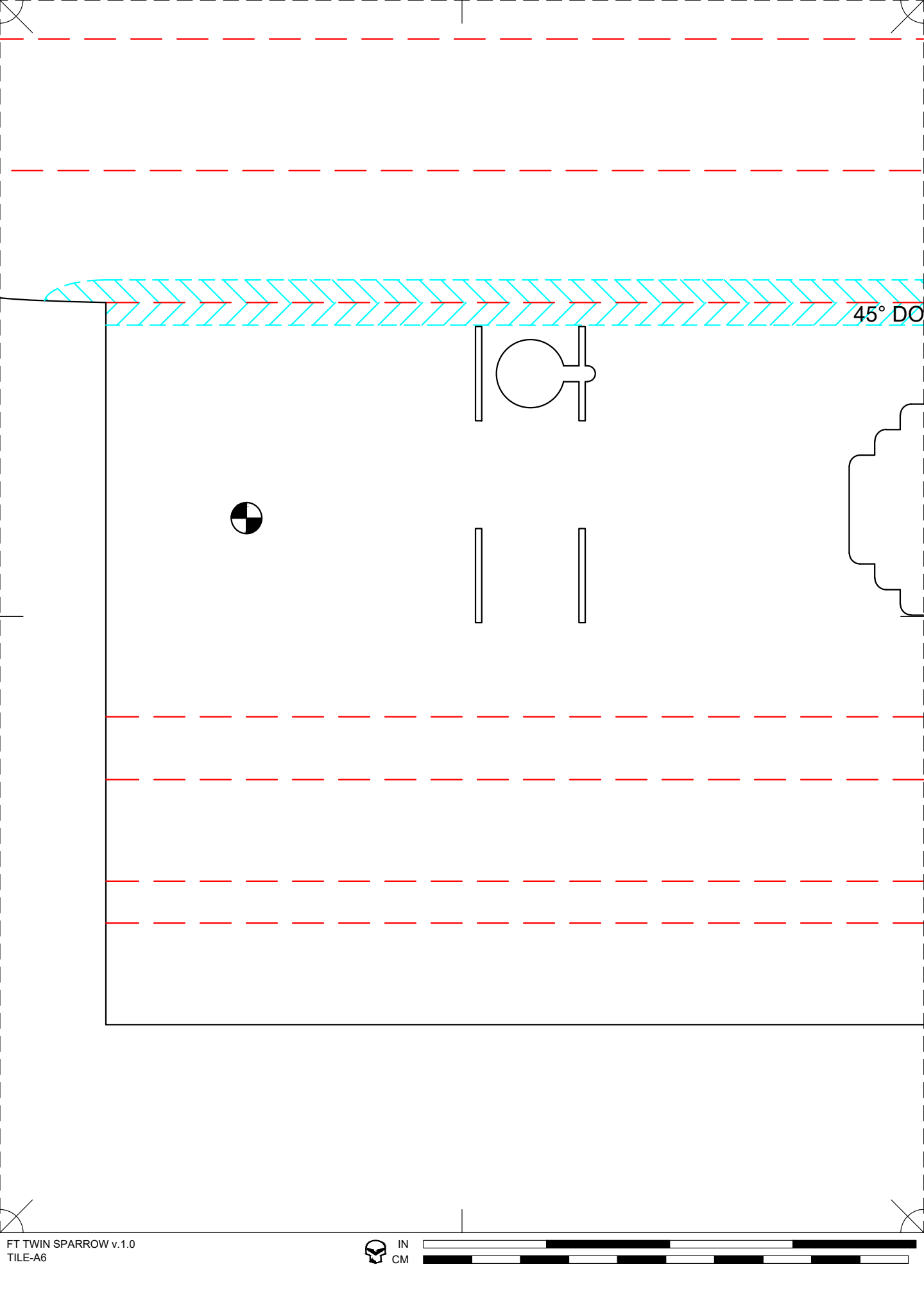
TAIL SKID
FOAM BOARD
FT TWIN SPARROW - v.1.0





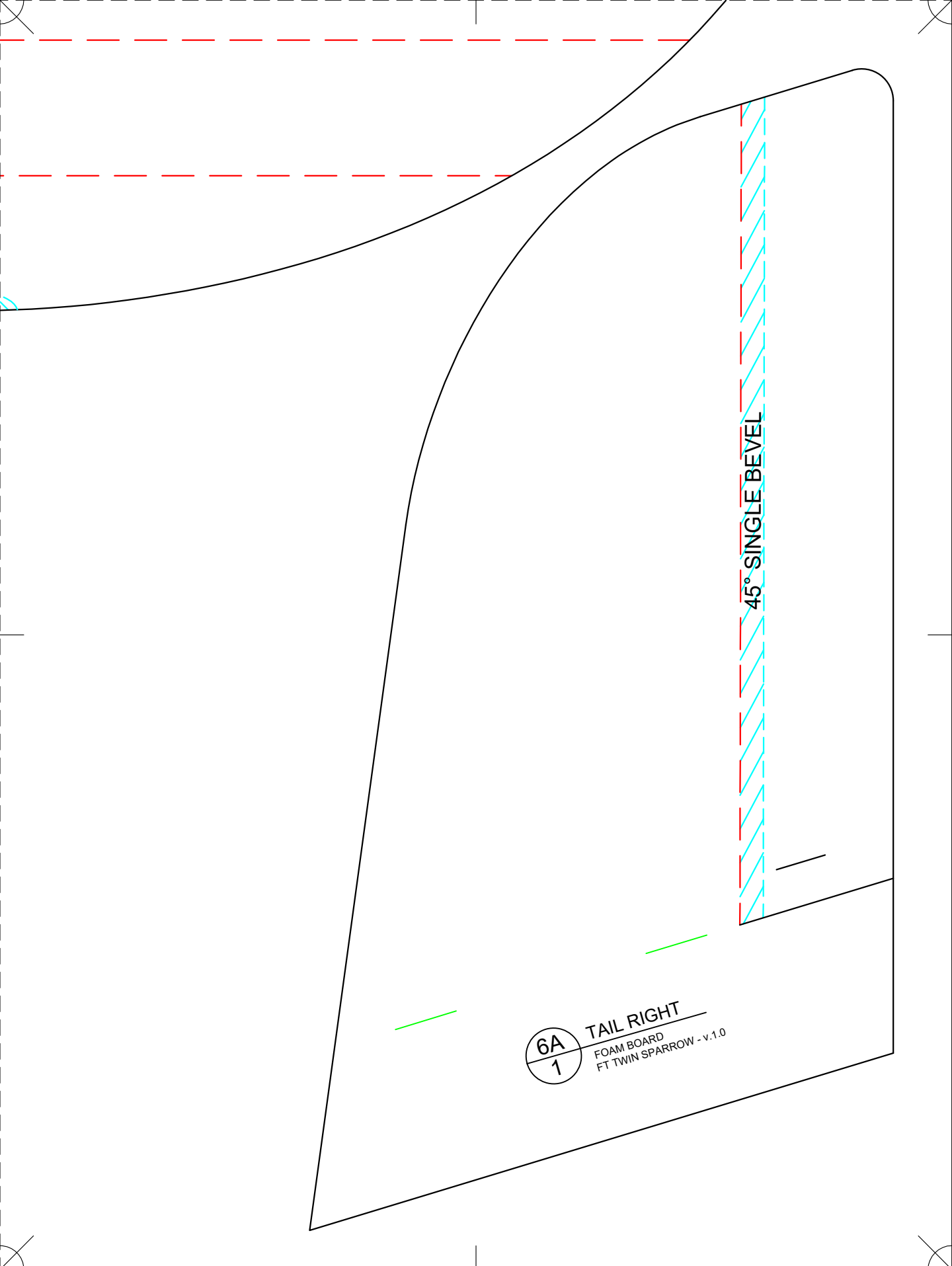
6B
1

TAIL LEFT
FOAM BOARD
FT TWIN SPARROW - v.1.0



DOUBLE BEVEL



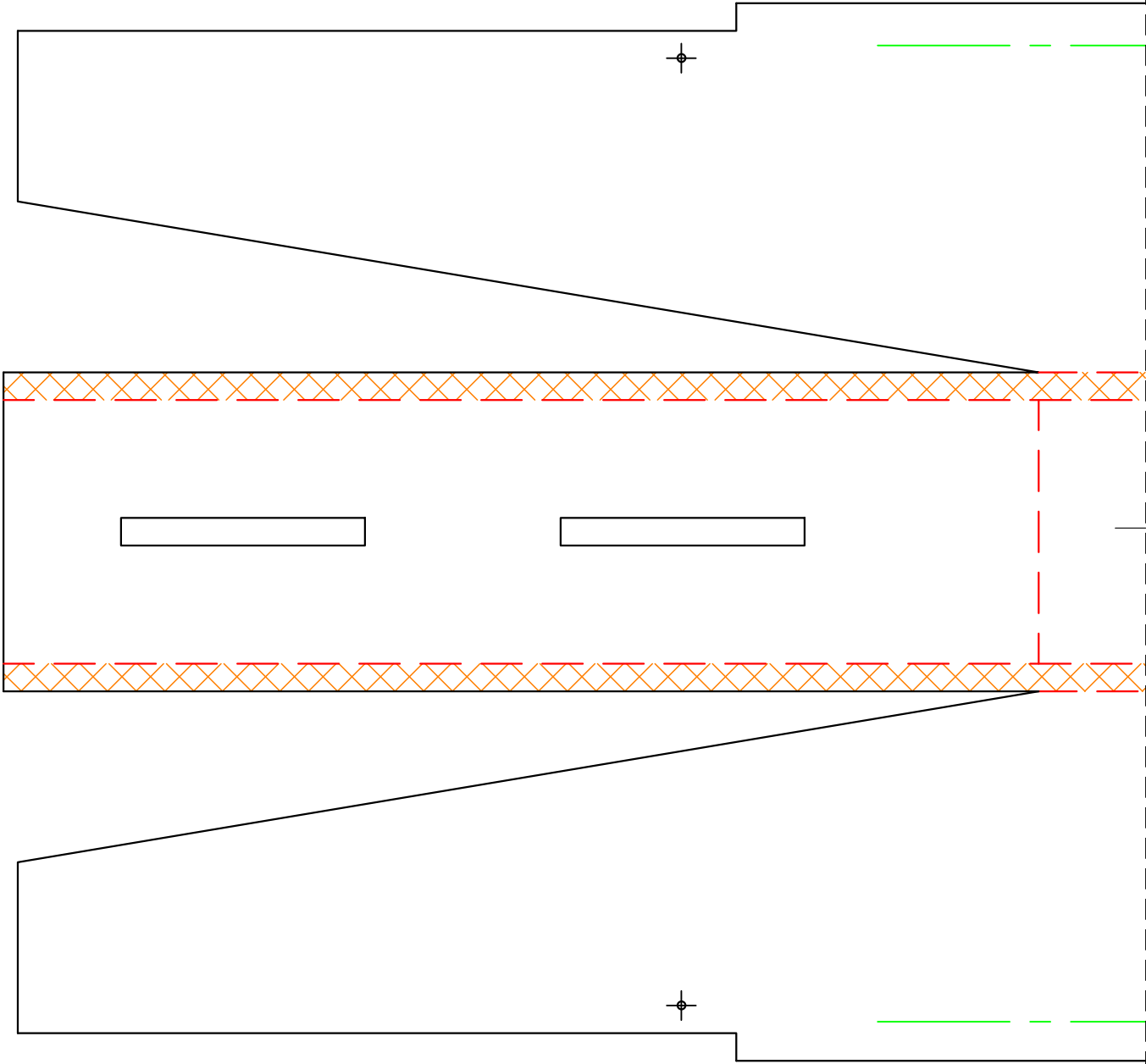


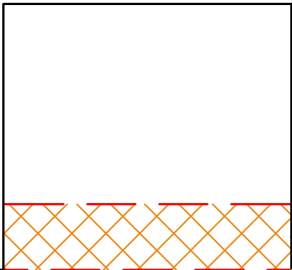
45° SINGLE BEVEL

6A
1
TAIL RIGHT
FOAM BOARD
FT TWIN SPARROW - v.1.0



IN
CM

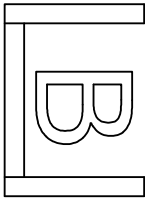
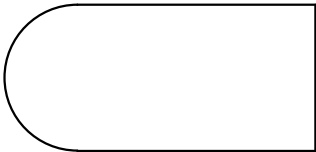




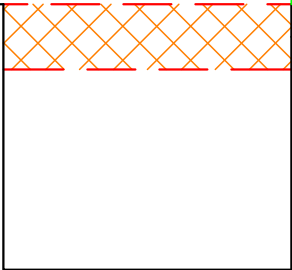
GLUE DOUBLER HERE



FUSELAGE
FOAM BOARD
FT TWIN SPARROW - v.1.0



GLUE DOUBLER HERE





IN
CM

