



www.flitetest.com

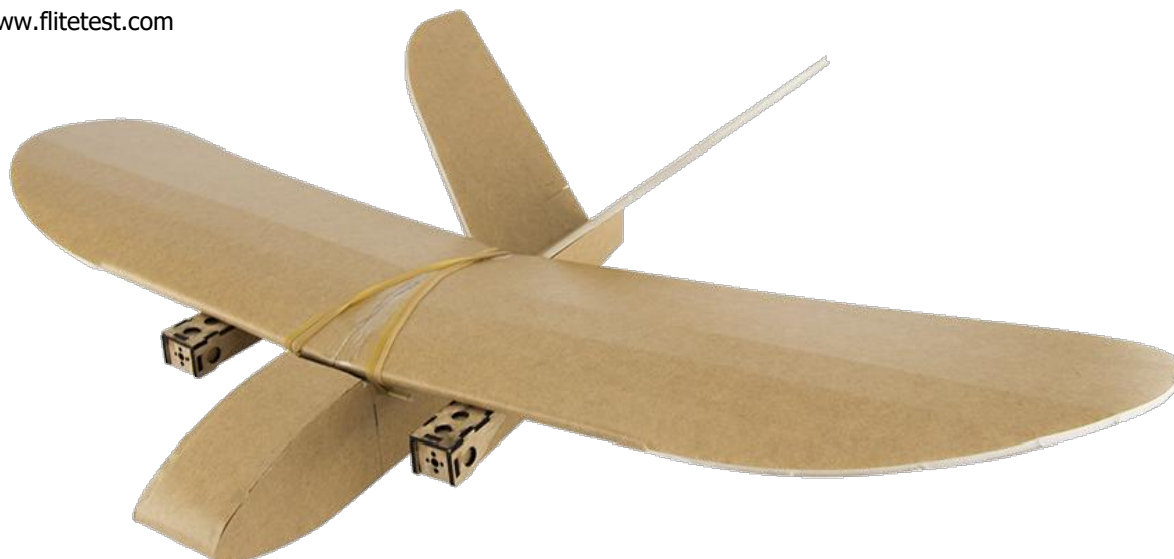
# FT Twin Sparrow

Designed By: Josh Bixler

Drawing By: Dan Sponholz

Version: 1.1

Date: 2019.02.04



## GENERAL SPECIFICATIONS:

LENGTH:	16.00 in	406 mm
CG:	2.75 in	69 mm
WINGSPAN:	28.50 in	723 mm
WING AREA:	180.0 in <sup>2</sup>	11.6 dm <sup>2</sup>
DRY WEIGHT:	5.6 oz.	158 g
ALL UP WEIGHT:	9.1 oz.	258 g
WING LOADING:	7.3 oz/ft <sup>2</sup>	22 g/dm <sup>2</sup>
WCL:	6.5	
THROWS:	12°	
EXPO:	30%	
CHANNELS:	3 [THR   V-TAIL]	

## RECOMMENDED ELECTRONICS:

MOTOR:	2X 1106 4500 kv
PROPELLER:	2X 3x3.5x3
ESC:	2X 12a min.
SERVOS:	2X 5 g
BATTERY:	450-850 mAh 2S-4S



## BUILD SKILL LEVEL:

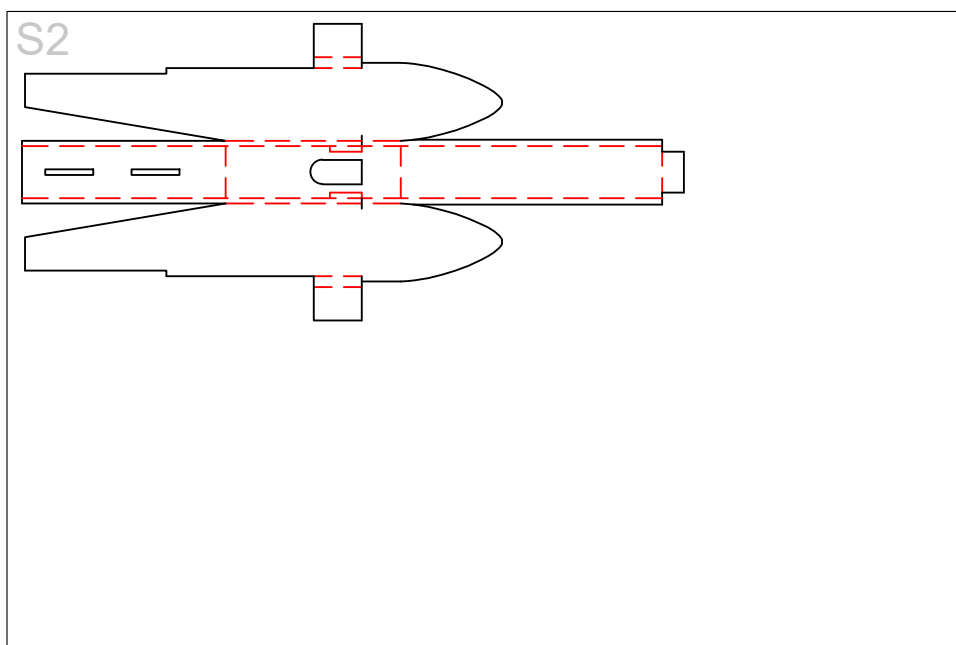
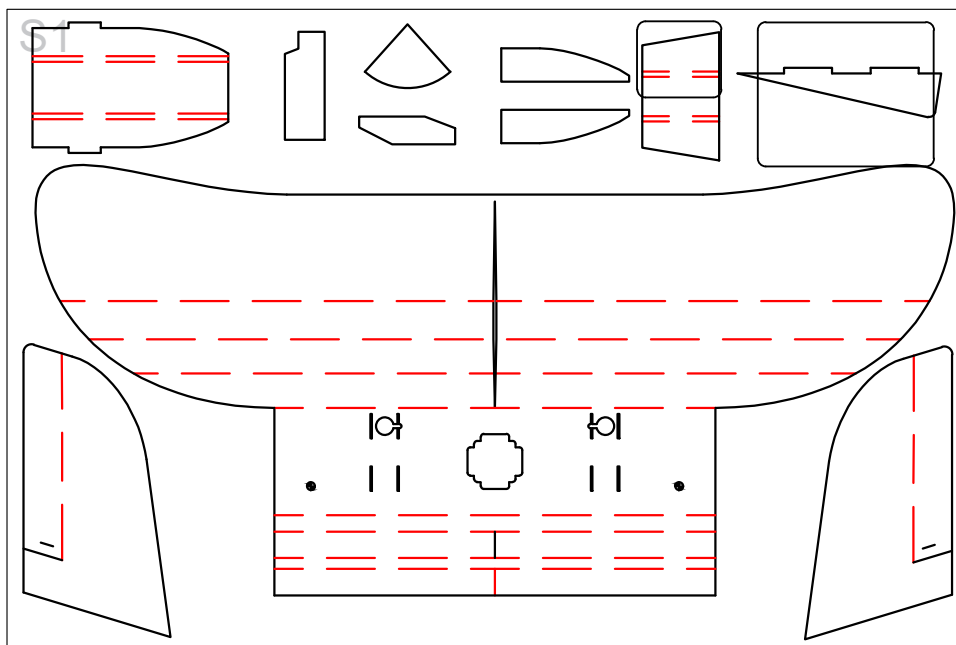


## PILOT SKILL LEVEL:



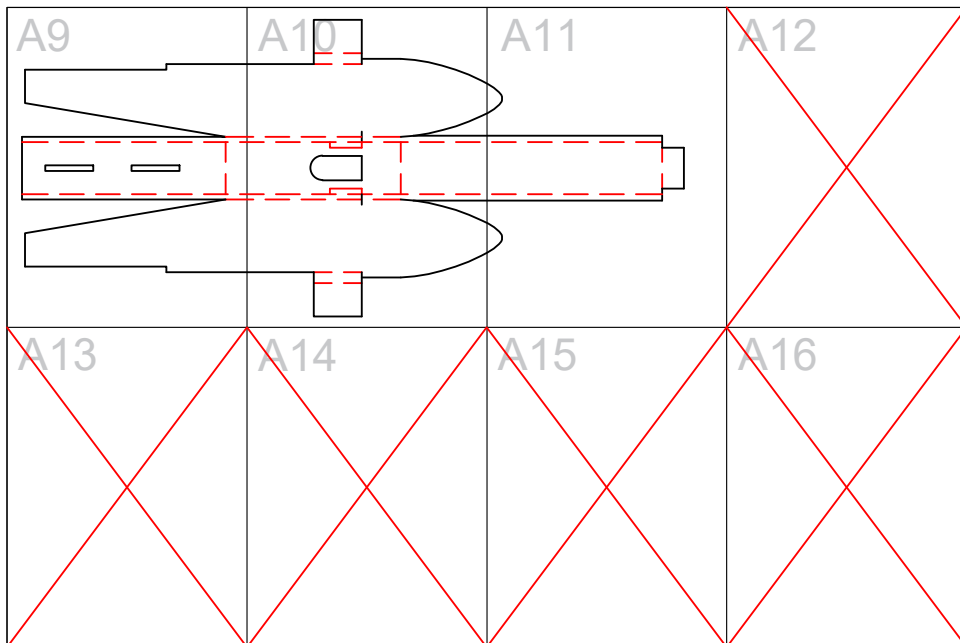
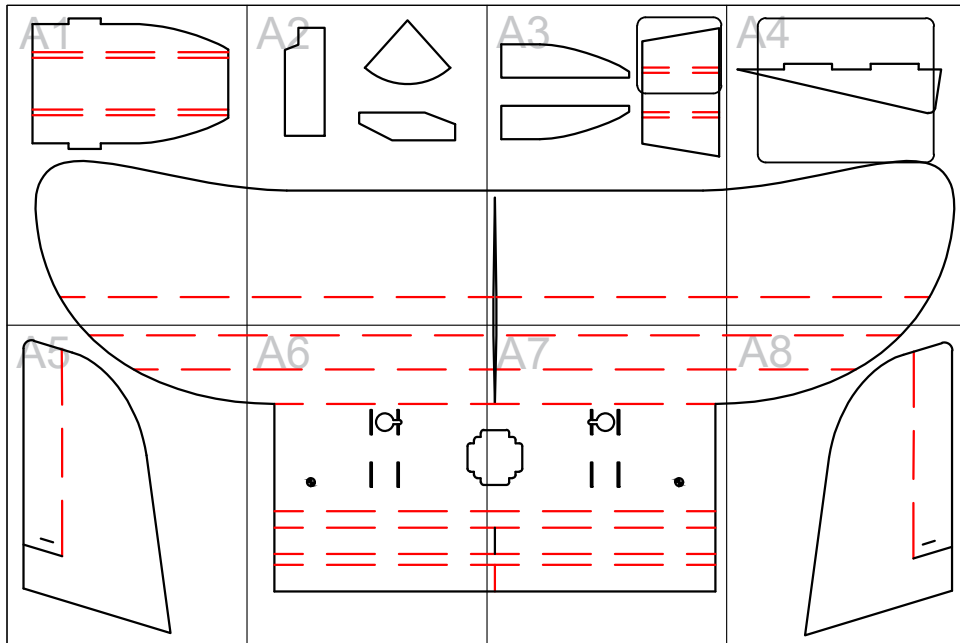


# FT Twin Sparrow: Full-Size Key



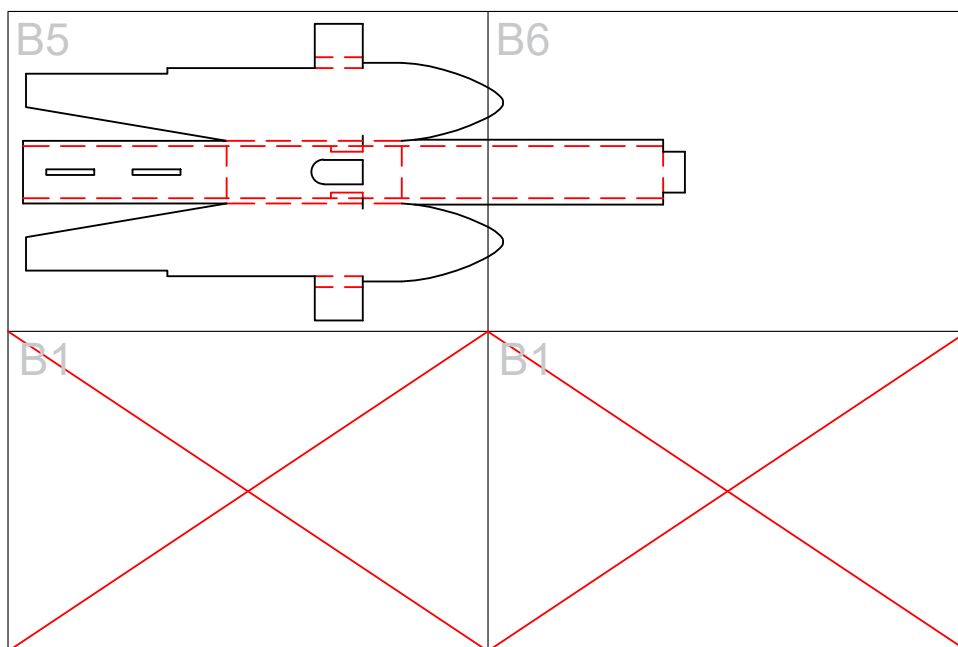
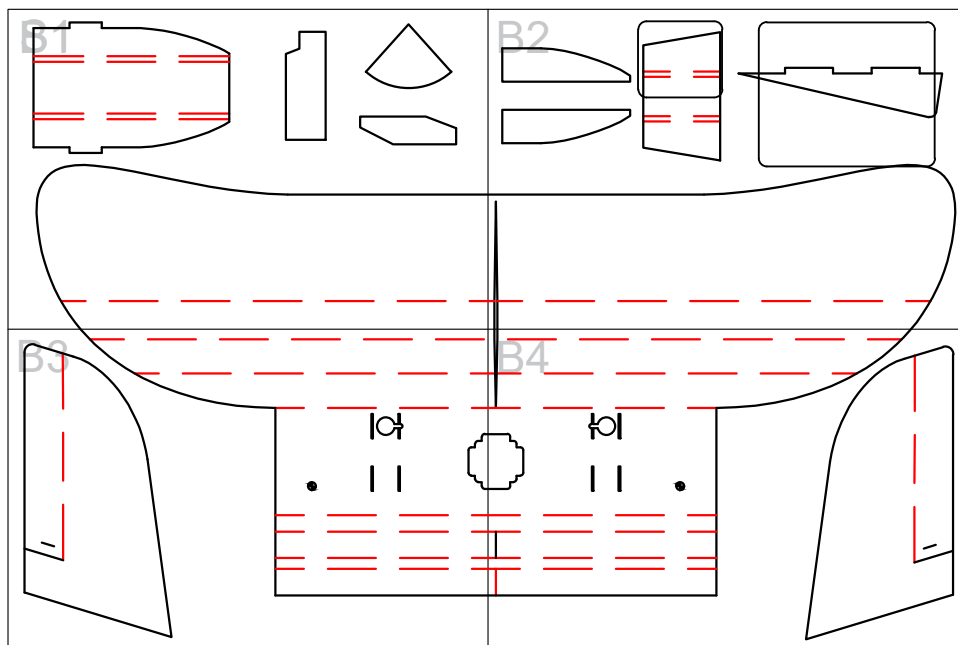


# FT Twin Sparrow: A-Size Tile Key





# FT Twin Sparrow: B-Size Tile Key

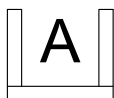




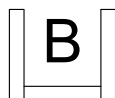
# Drawing Key



## FOLD TYPES



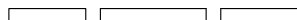
A



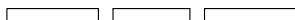
B



C



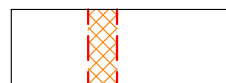
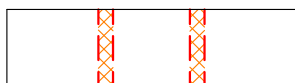
A - FOLD (ABOVE)



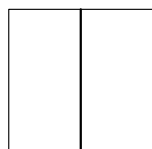
B - FOLD (BESIDE)



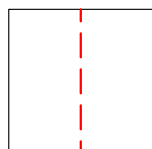
C - FOLD (COVER)



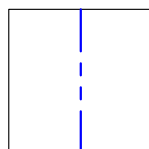
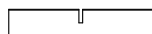
## LINE TYPE/COLOR



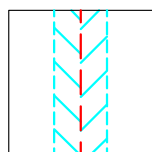
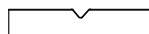
CUT



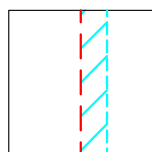
50% SCORE



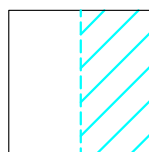
CREASE



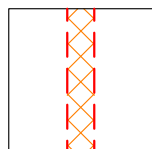
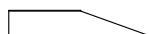
45° DOUBLE  
BEVEL



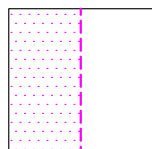
45° SINGLE  
BEVEL



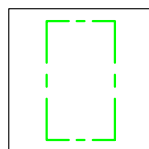
EDGE  
BEVEL



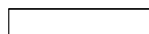
CAVITY



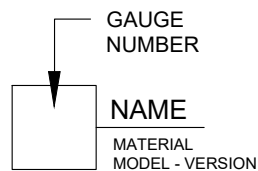
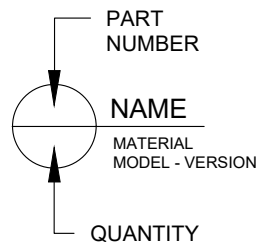
REMOVE  
PAPER



REFERENCE/  
OPTIONAL



## SYMBOLS



CENTER  
OF  
GRAVITY  
(CG)



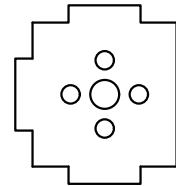
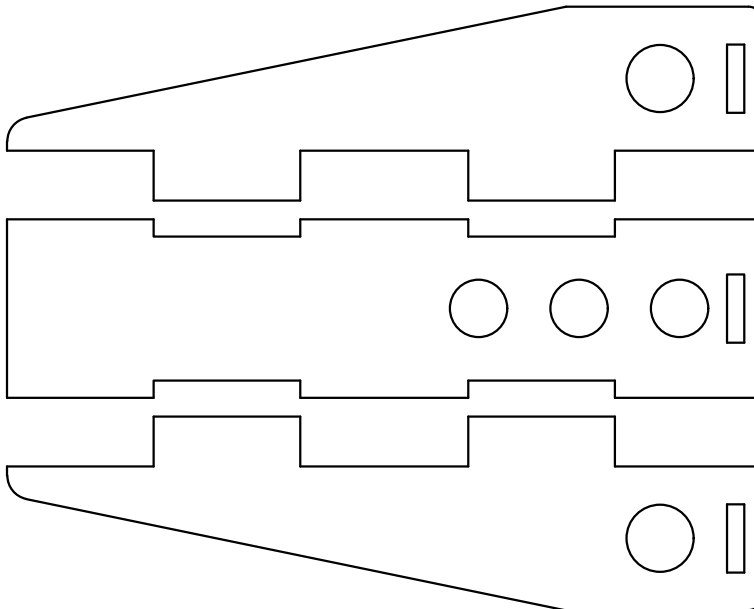
# FT Twin Sparrow: Wood Parts



FOR FT TWIN SPARROW

FT MICRO NACELLE / FIREWALL

**2X**

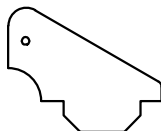


HOBBY GRADE PLYWOOD  
3/32" (2.4 mm) THICK

FOR FT SPARROW (PUSHER)

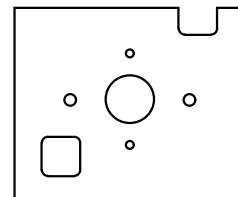
FT MINI CONTROL HORN

**2X**



HOBBY GRADE PLYWOOD  
1/16" (1.6 mm) THICK

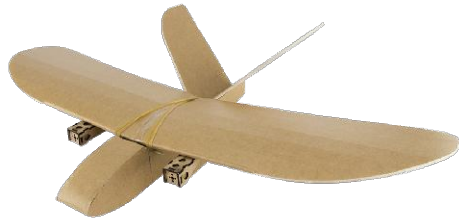
FT MINI FIREWALL



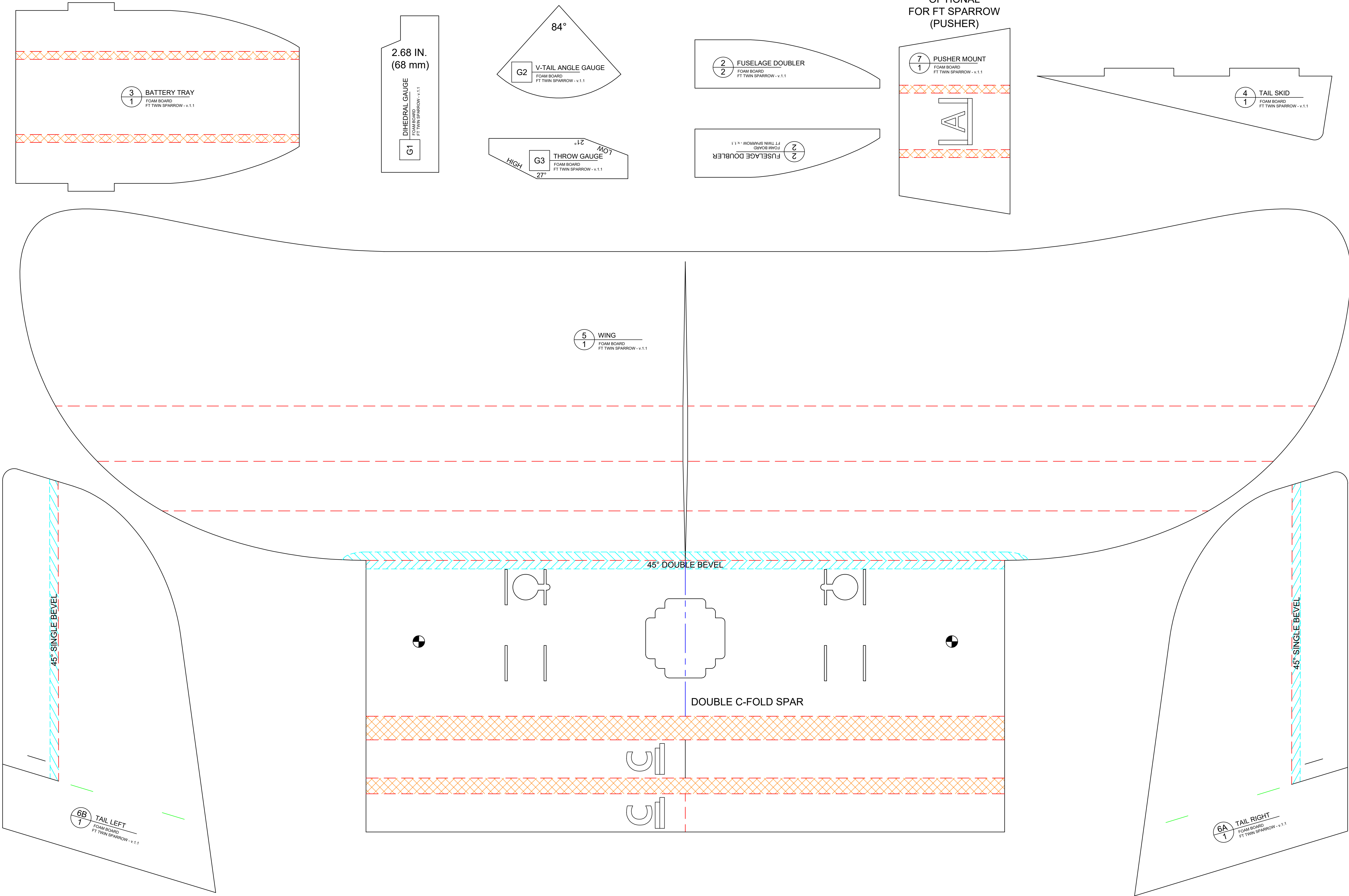
HOBBY GRADE PLYWOOD  
1/16" (1.6 mm) THICK

FT Twin Sparrow

Designed By: Josh Bixler  
Drawing By: Dan Sponholz  
Version: 1.1  
Date: 2019.02.04

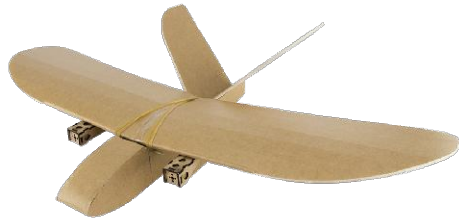


www.flitetest.com

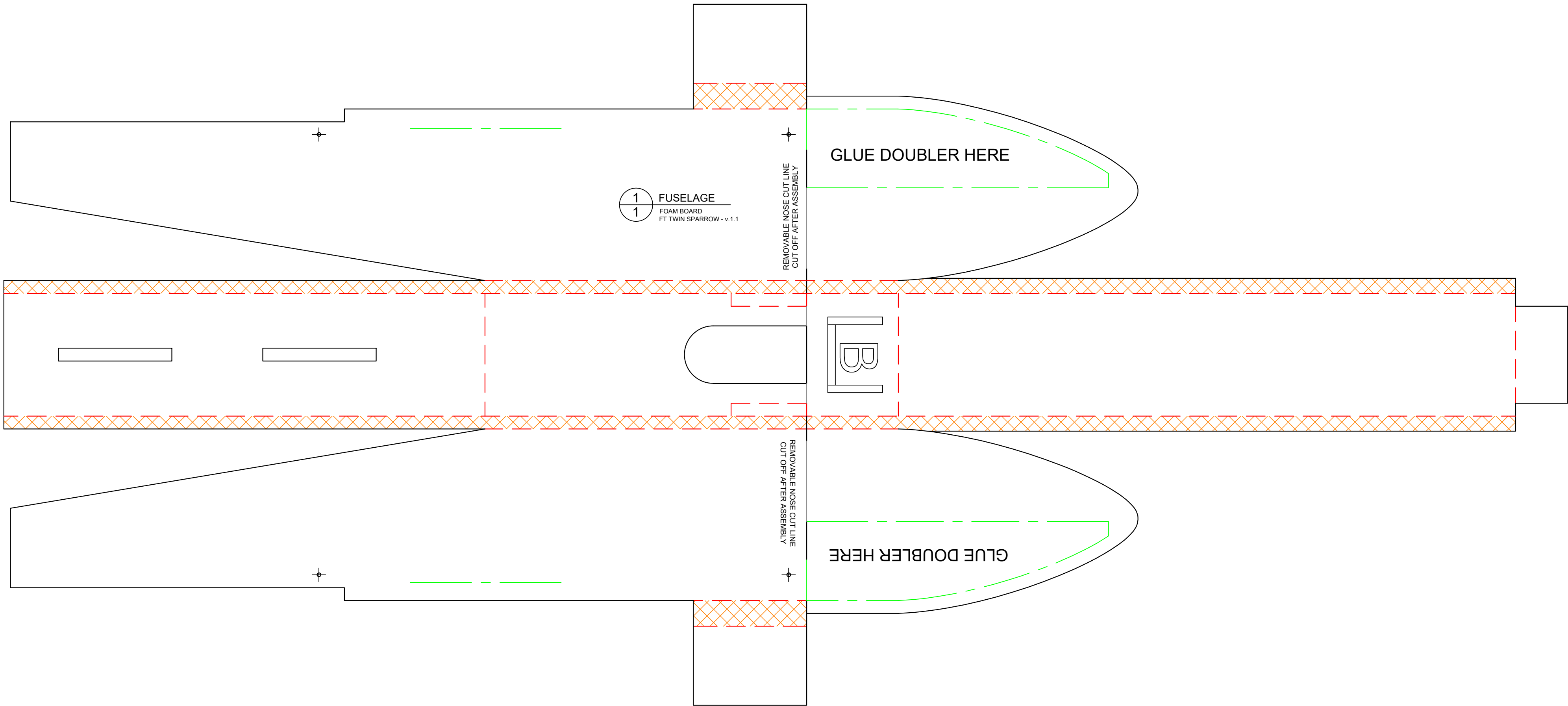


FT Twin Sparrow

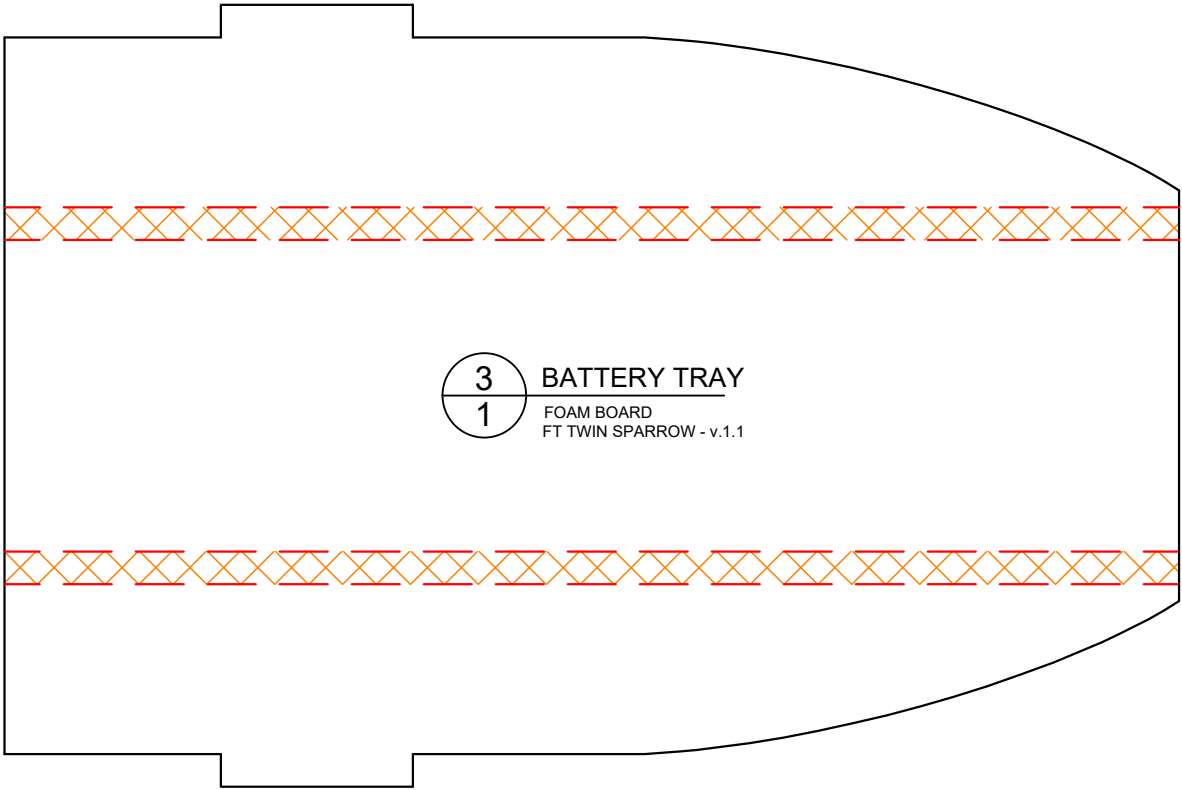
Designed By: Josh Bixler  
Drawing By: Dan Sponholz  
Version: 1.1  
Date: 2019.02.04



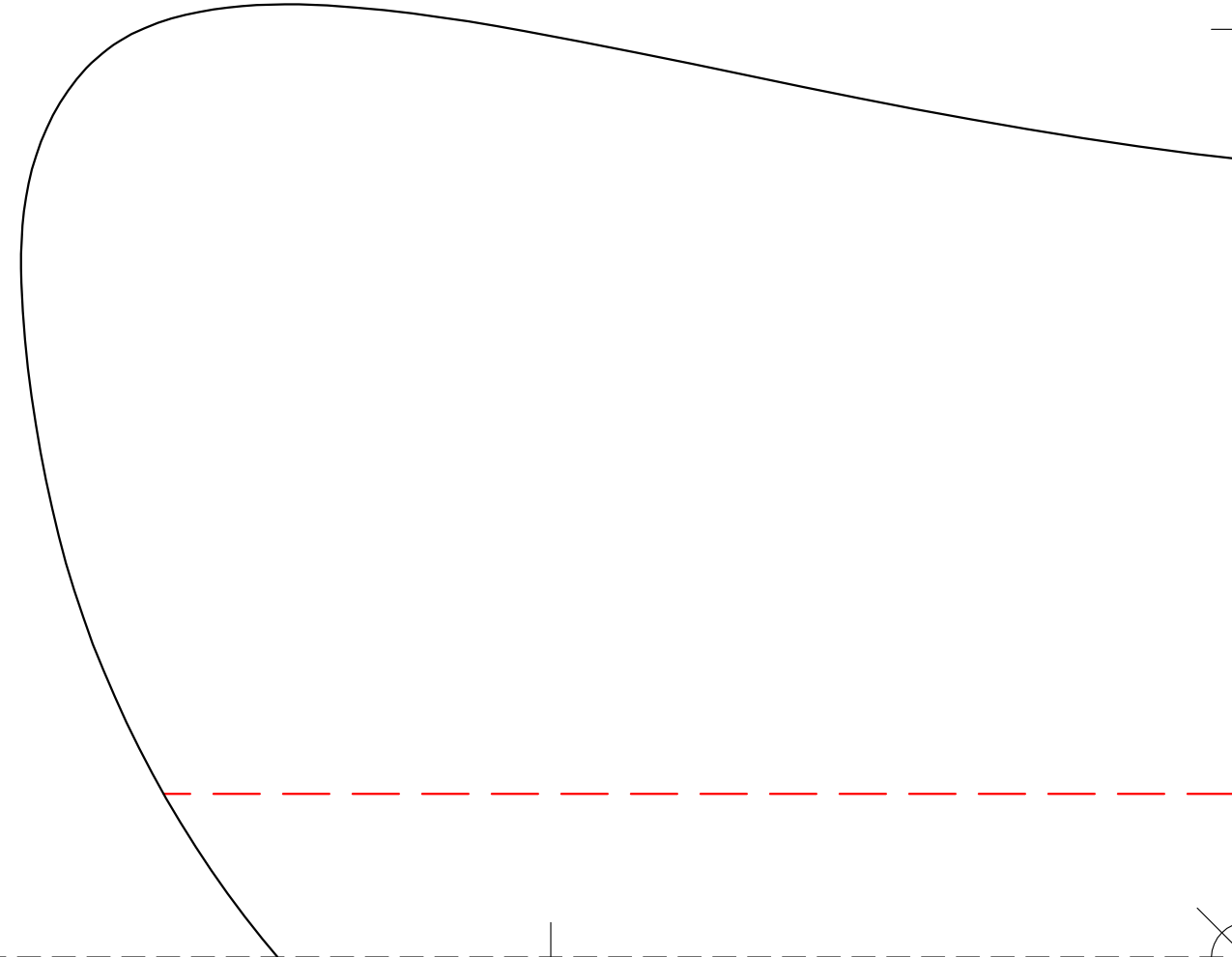
www.flitetest.com

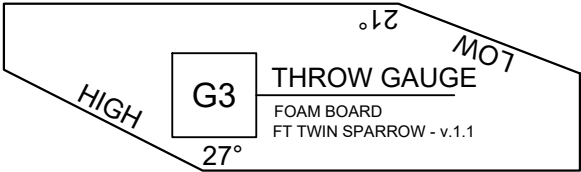
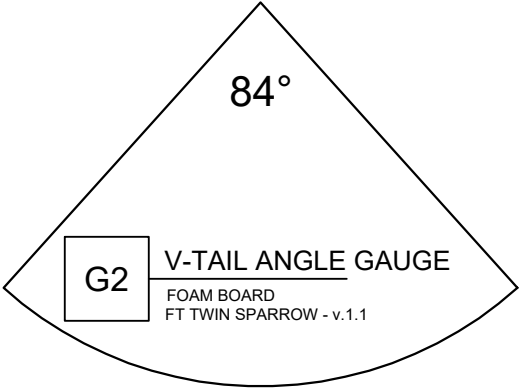
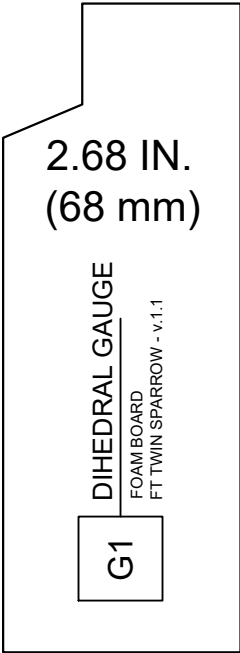






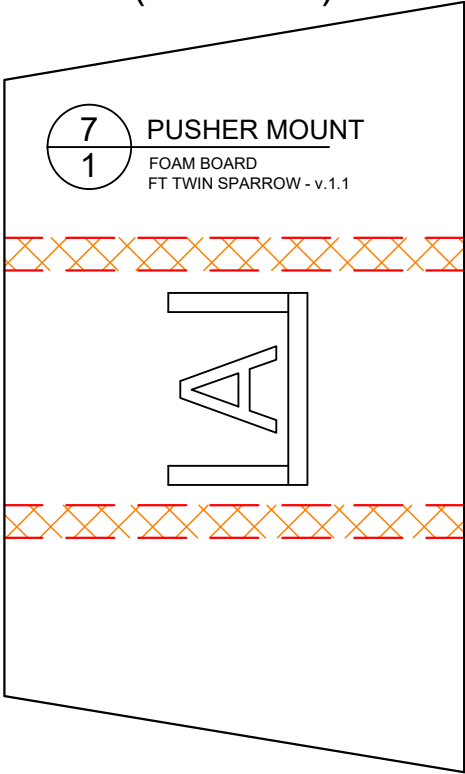
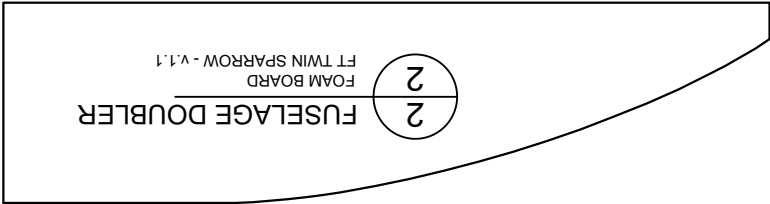
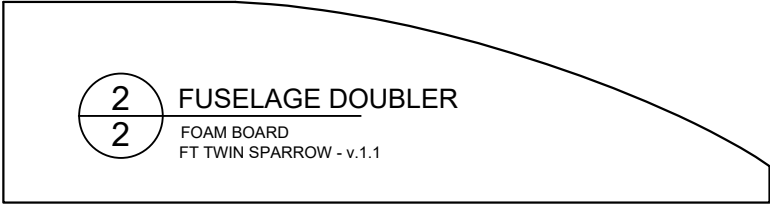
**BATTERY TRAY**  
FOAM BOARD  
FT TWIN SPARROW - v.1.1

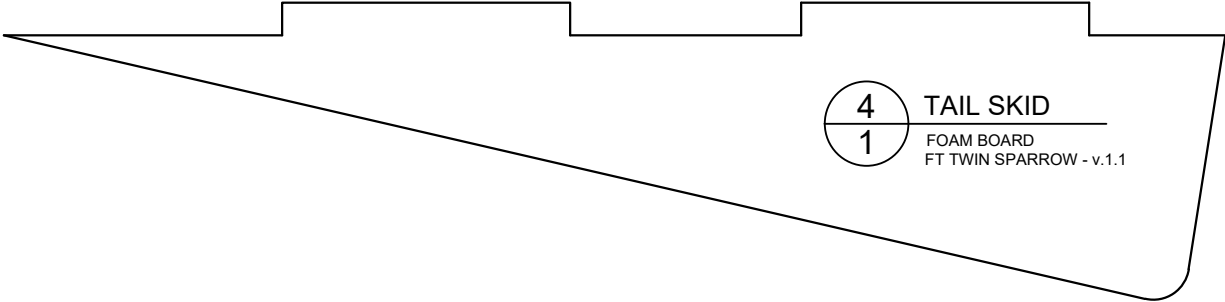






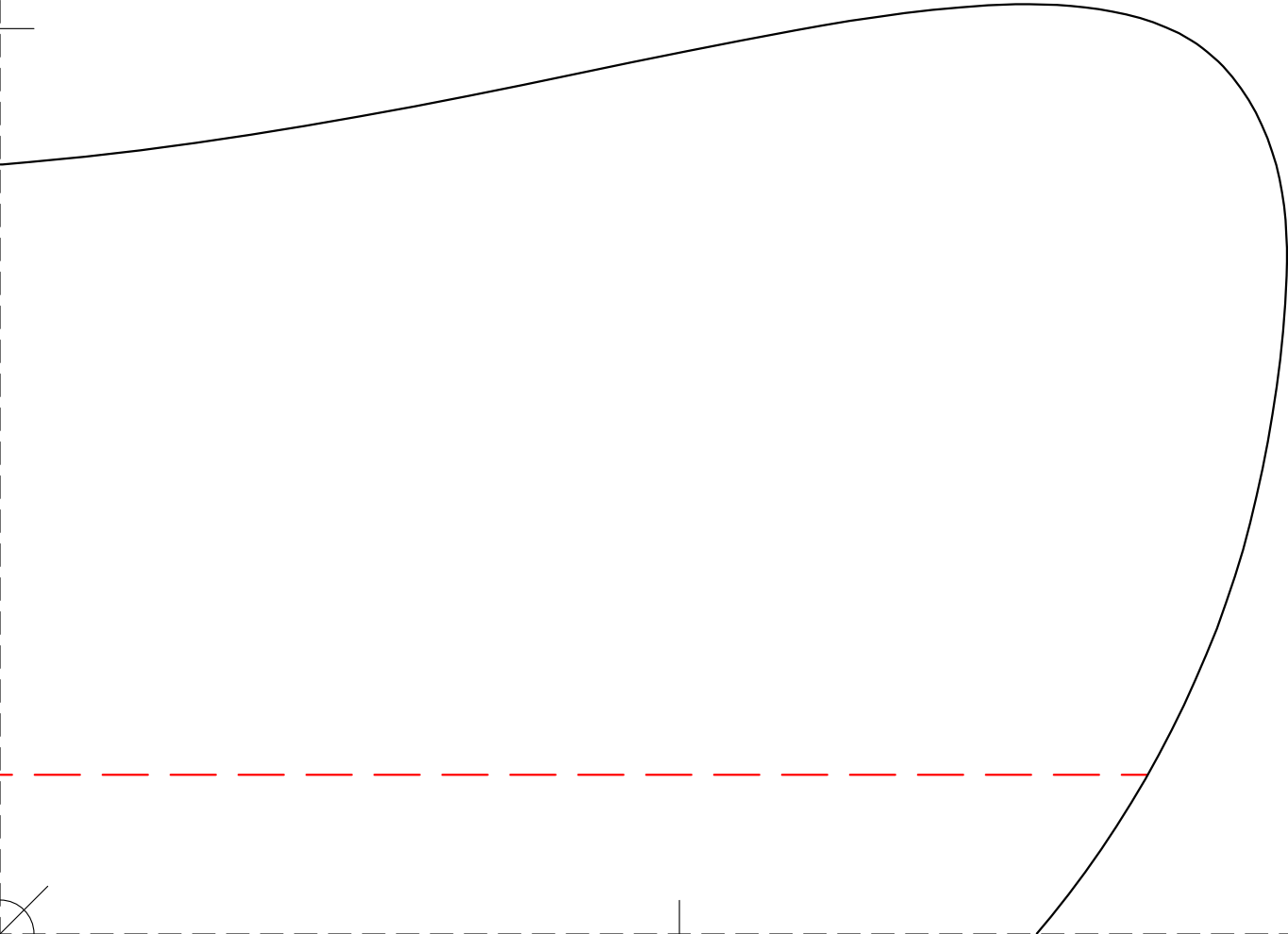
OPTIONAL  
FOR FT SPARROW  
(PUSHER)

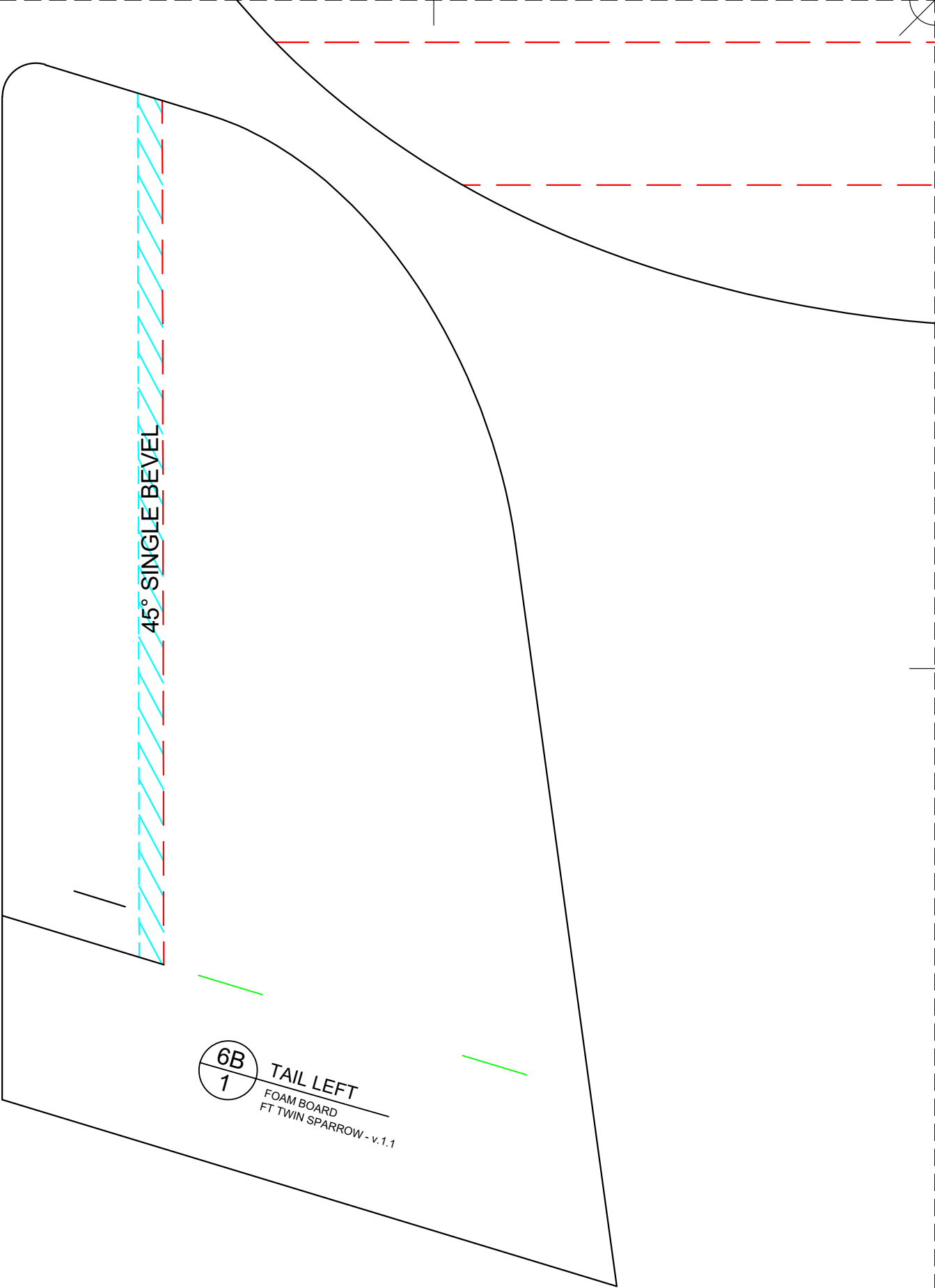




4  
1

TAIL SKID  
FOAM BOARD  
FT TWIN SPARROW - v.1.1

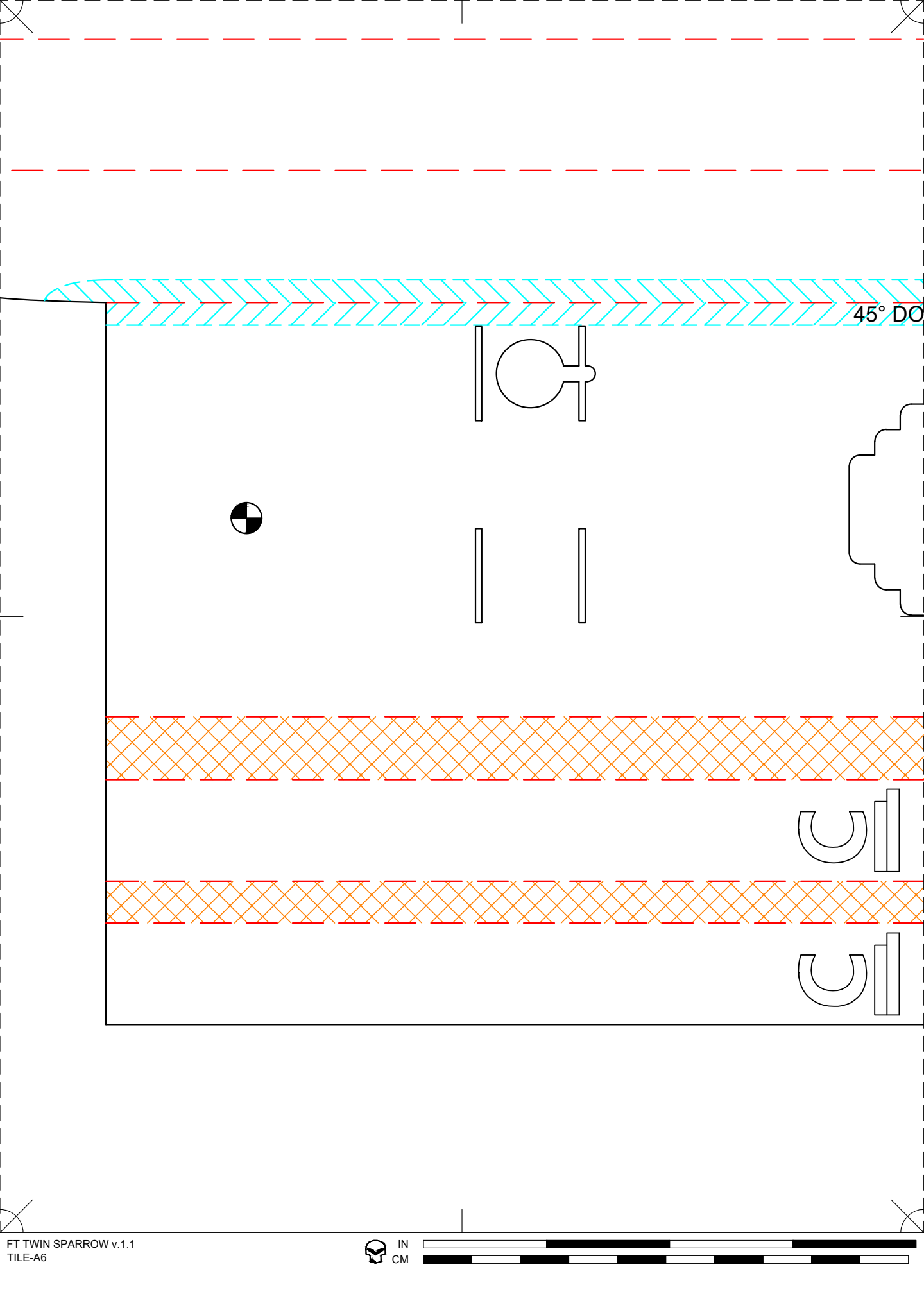




45° SINGLE BEVEL

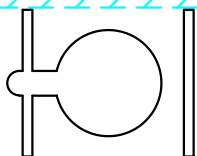
6B  
1

TAIL LEFT  
FOAM BOARD  
FT TWIN SPARROW - v.1.1

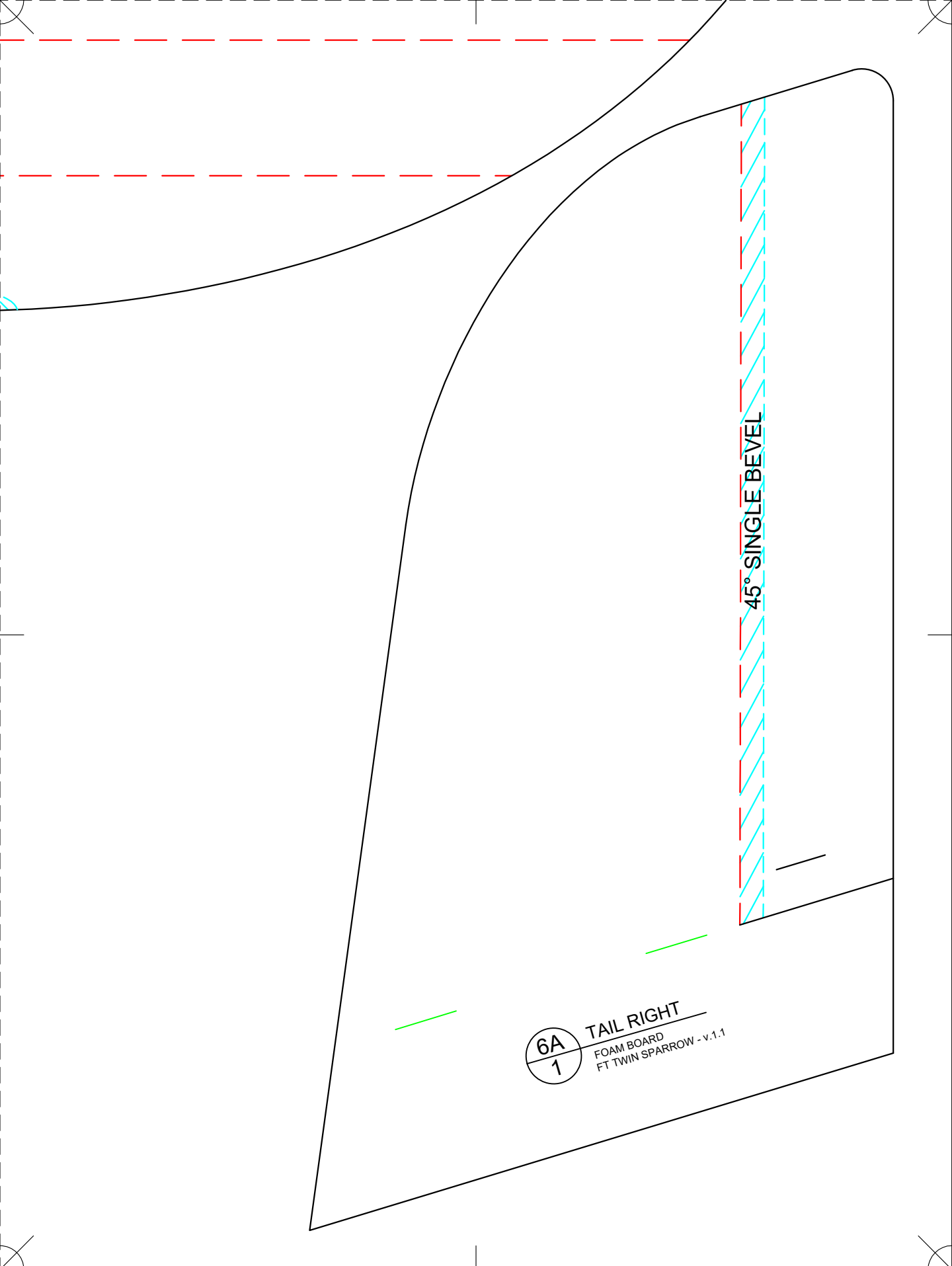


45° DO

DOUBLE BEVEL



DOUBLE C-FOLD SPAR



6A  
1

**TAIL RIGHT**  
FOAM BOARD  
FT TWIN SPARROW - v.1.1

45° SINGLE BEVEL







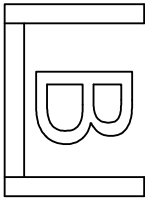
1  
1

FUSELAGE

FOAM BOARD  
FT TWIN SPARROW - v.1.1

REMOVABLE NOSE CUT LINE  
CUT OFF AFTER ASSEMBLY

GLUE DOUBLER HERE

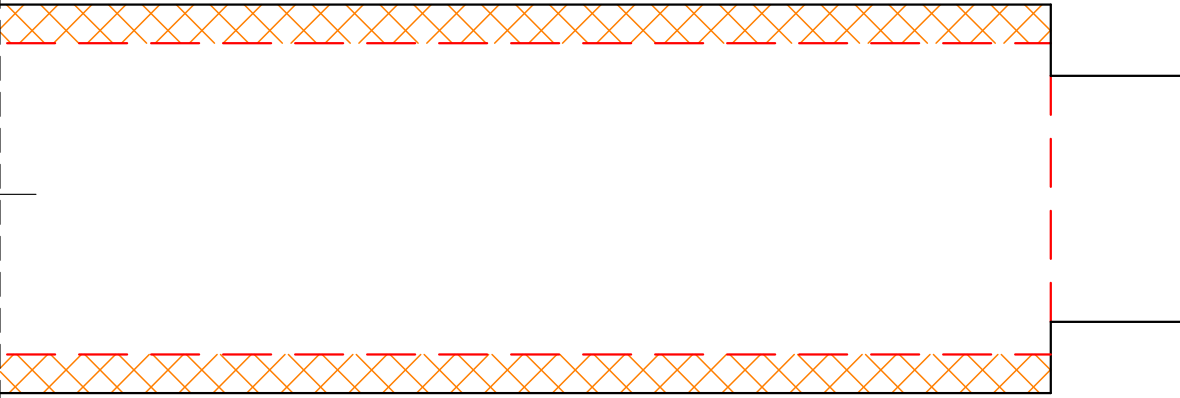


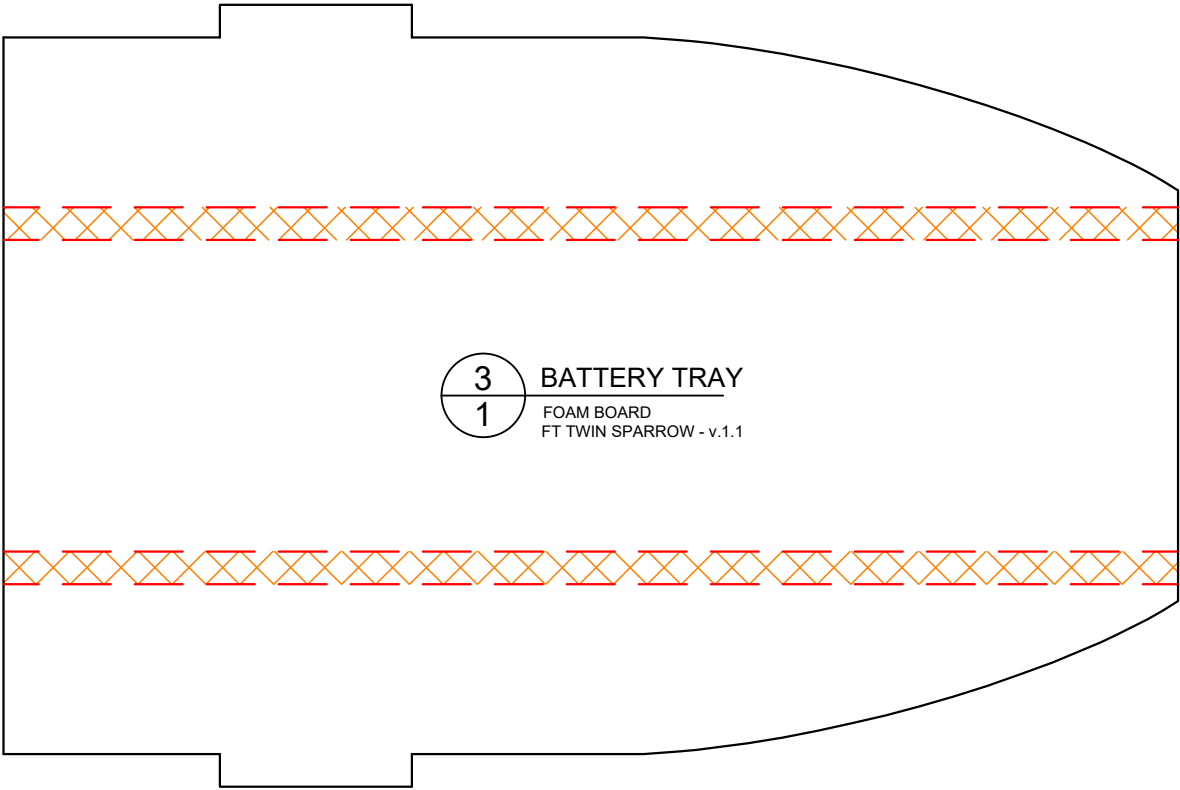
REMOVABLE NOSE CUT LINE  
CUT OFF AFTER ASSEMBLY

GLUE DOUBLER HERE

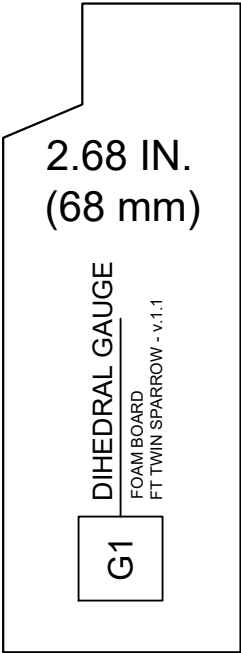


IN  
CM

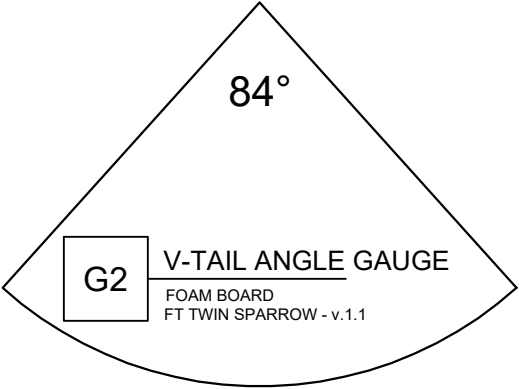




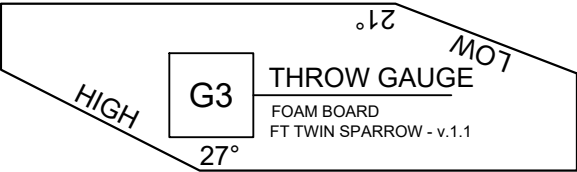
3  
1 BATTERY TRAY  
FOAM BOARD  
FT TWIN SPARROW - v.1.1



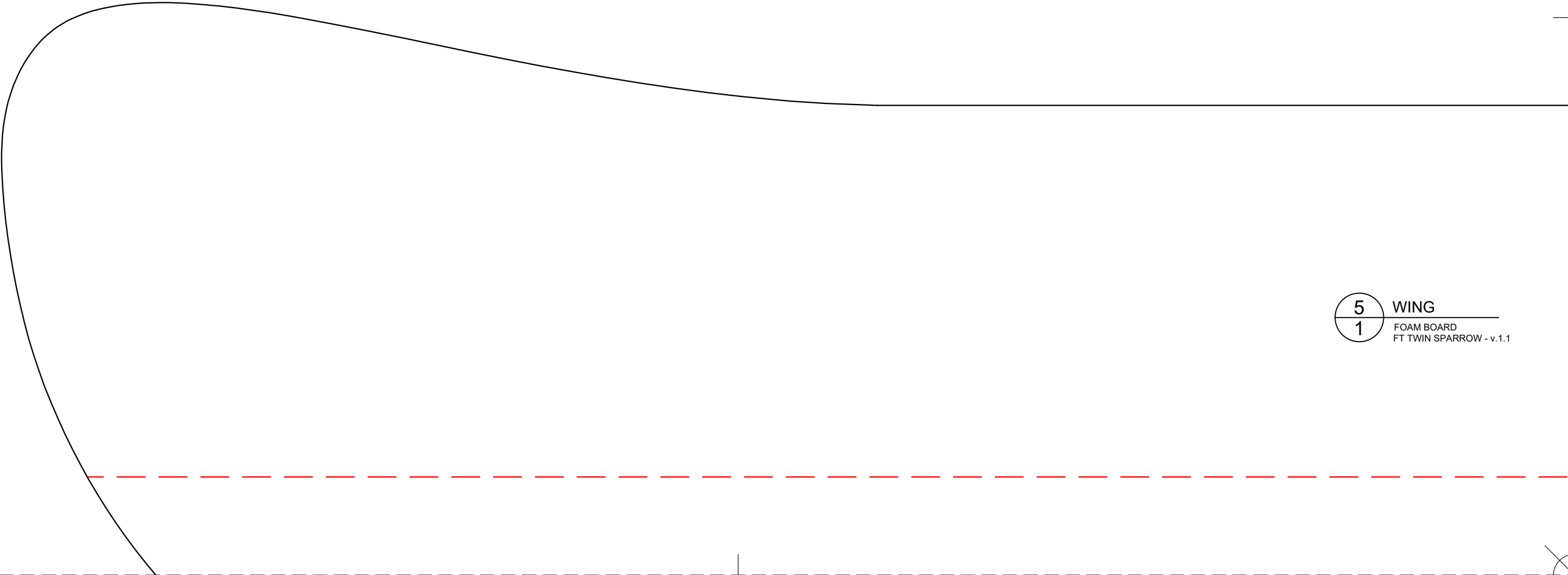
G1  
DIHEDRAL GAUGE  
FOAM BOARD  
FT TWIN SPARROW - v.1.1



G2  
V-TAIL ANGLE GAUGE  
FOAM BOARD  
FT TWIN SPARROW - v.1.1



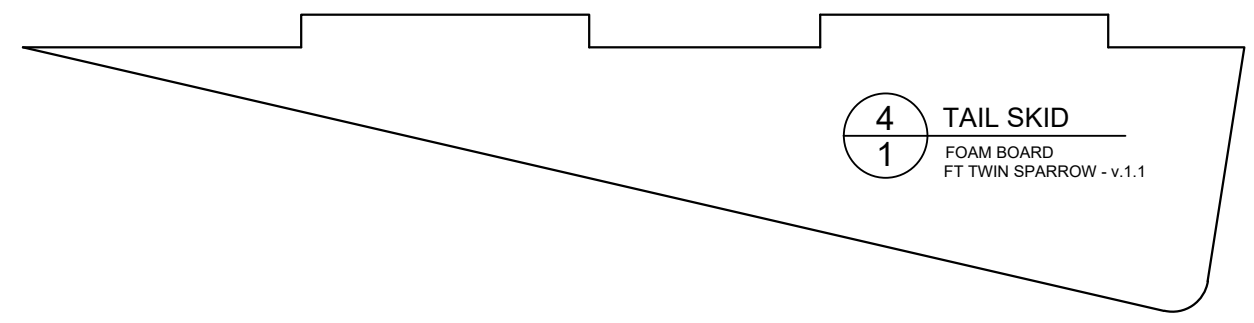
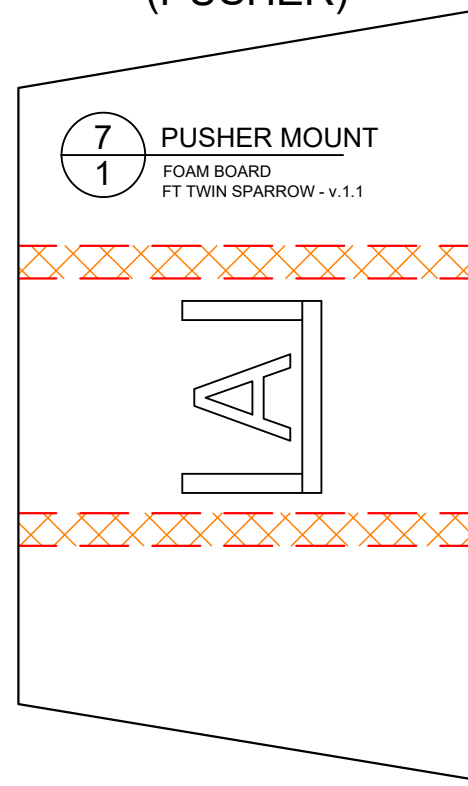
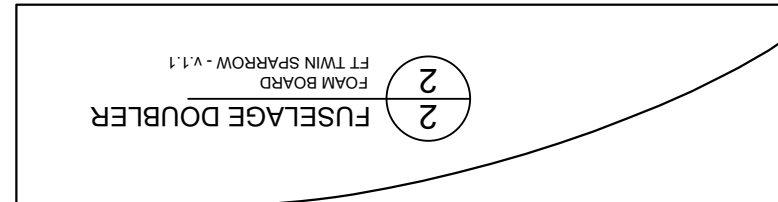
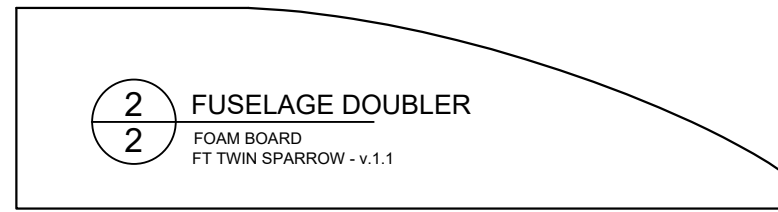
G3  
THROW GAUGE  
FOAM BOARD  
FT TWIN SPARROW - v.1.1

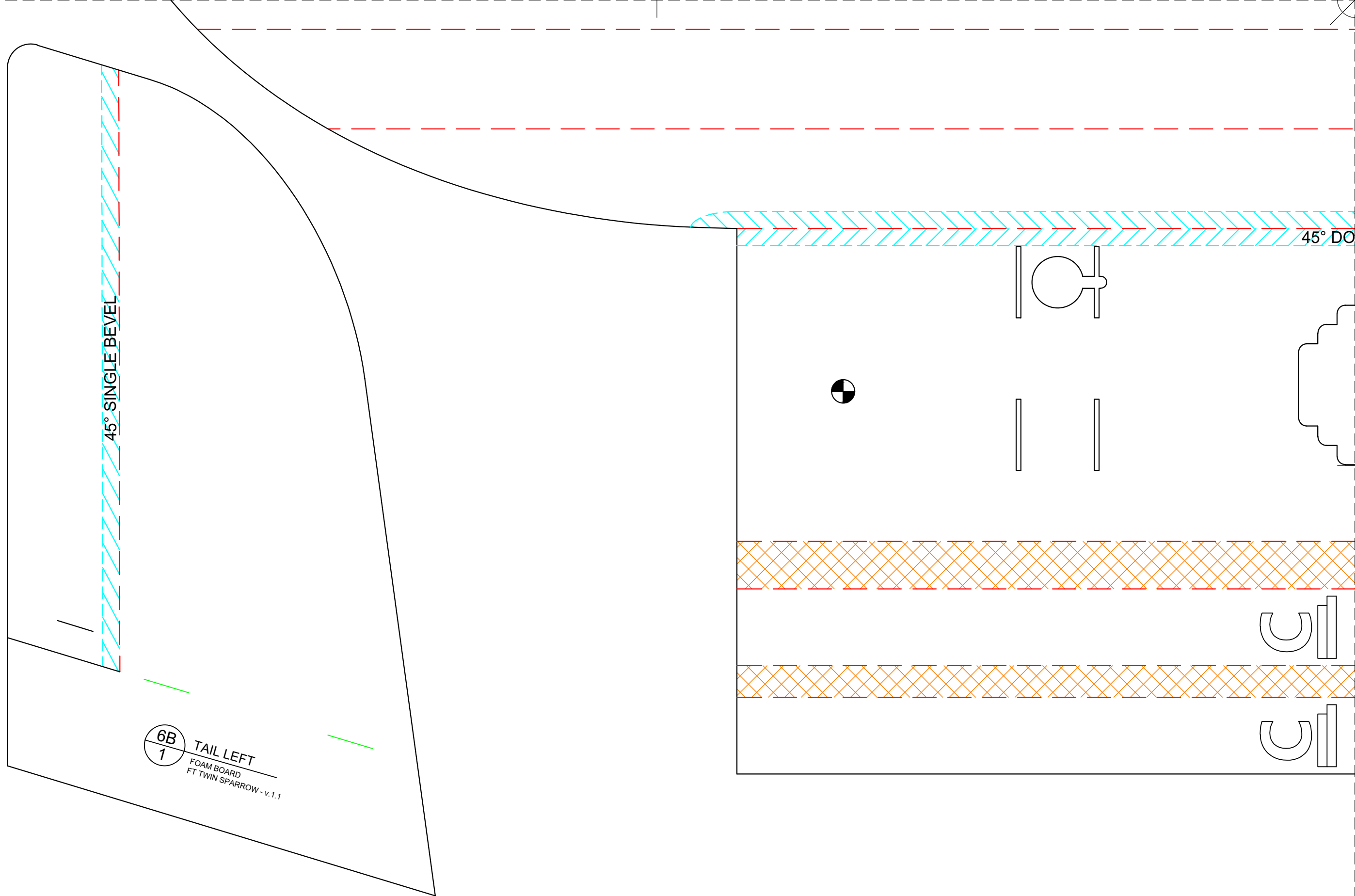


5  
1 WING  
FOAM BOARD  
FT TWIN SPARROW - v.1.1



# OPTIONAL FOR FT SPARROW (PUSHER)



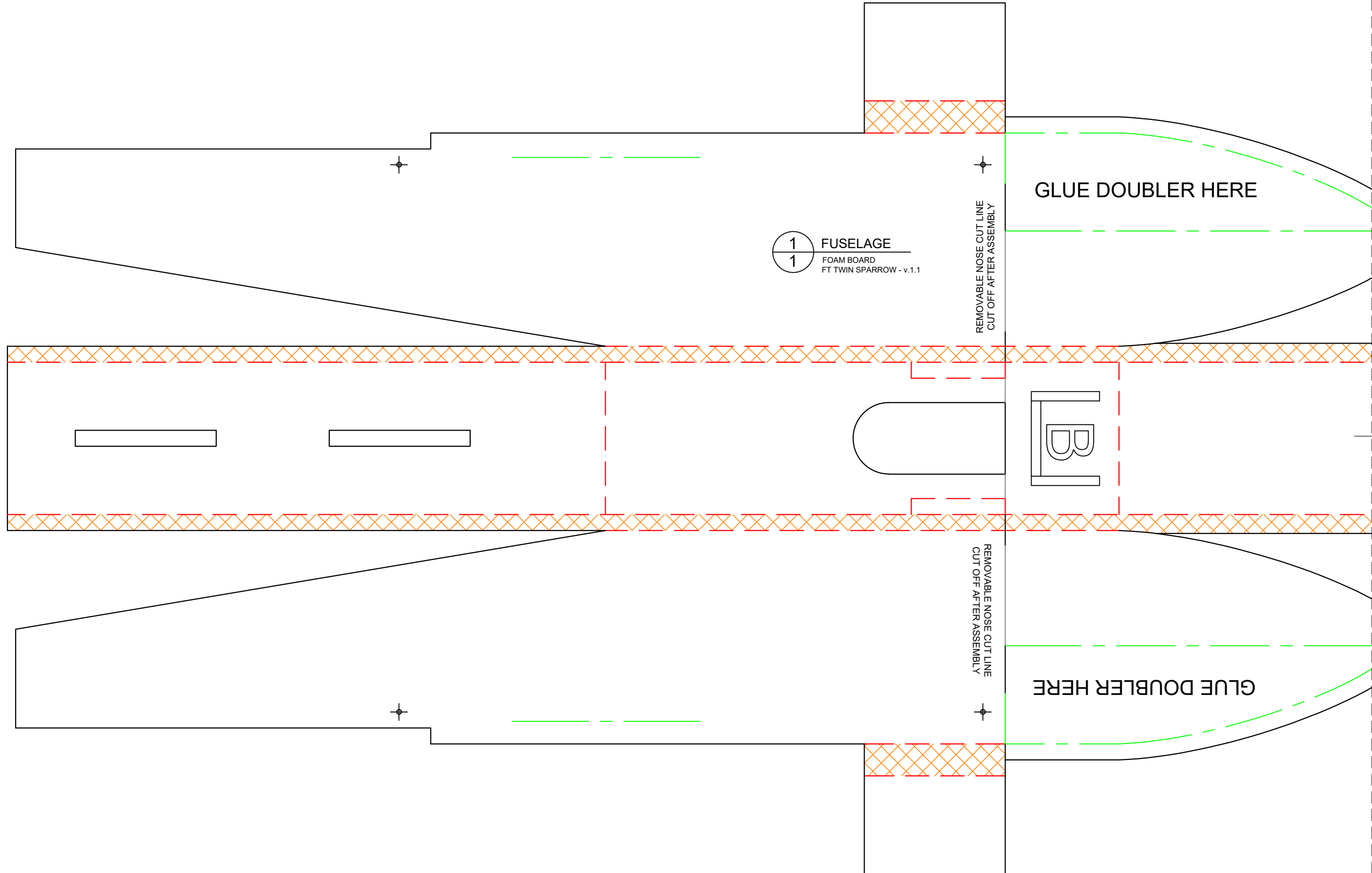


DOUBLE BEVEL

DOUBLE C-FOLD SPAR

45° SINGLE BEVEL

6A  
1  
TAIL RIGHT  
FOAM BOARD  
FT TWIN SPARROW - v.1.1







IN  
CM

